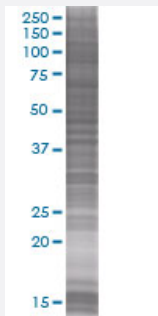


# CCBL1 293T Cell Transient Overexpression Lysate(Denatured)

Catalog # H00000883-T01

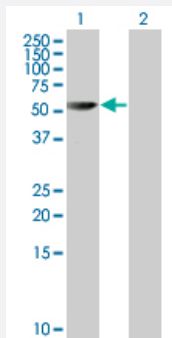
Size 100 uL

## Applications



### SDS-PAGE Gel

CCBL1 transfected lysate



### Western Blot

Lane 1: CCBL1 transfected lysate ( 41.25 KDa).

Lane 2: Non-transfected lysate.

## Specification

|                               |                        |
|-------------------------------|------------------------|
| Transfected Cell Line         | 293T                   |
| Plasmid                       | pCMV-CCBL1 full-length |
| Host                          | Human                  |
| Theoretical MW (kDa)          | 41.25                  |
| Interspecies Antigen Sequence | Mouse (71); Rat (72)   |

**Quality Control Testing**

Transient overexpression cell lysate was tested with Anti-CCBL1 antibody ([H00000883-B01](#)) by Western Blots.  
SDS-PAGE Gel  
CCBL1 transfected lysate  
Western Blot  
Lane 1: CCBL1 transfected lysate ( 41.25 KDa).  
Lane 2: Non-transfected lysate.

**Storage Buffer**

1X Sample Buffer (50 mM Tris-HCl, 2% SDS, 10% glycerol, 300 mM 2-mercaptoethanol, 0.01% Bromophenol blue)

**Storage Instruction**

Store at -80°C. Aliquot to avoid repeated freezing and thawing.

## Applications

- Western Blot

## Gene Info — CCBL1

**Entrez GeneID**[883](#)**GeneBank Accession#**[BC033685](#)**Protein Accession#**[AAH33685](#)**Gene Name**

CCBL1

**Gene Alias**

FLJ95217, GTK, KAT1, KATI, MGC29624

**Gene Description**

cysteine conjugate-beta lyase, cytoplasmic

**Omim ID**[600547](#)**Gene Ontology**[Hyperlink](#)**Gene Summary**

This gene encodes a cytosolic enzyme that is responsible for the metabolism of cysteine conjugates of certain halogenated alkenes and alkanes. This metabolism can form reactive metabolites leading to nephrotoxicity and neurotoxicity. Increased levels of this enzyme have been linked to schizophrenia. Multiple transcript variants that encode different isoforms have been identified for this gene. [provided by RefSeq]

**Other Designations**

OTTHUMP00000022311|beta-lysase, kidney|cysteine conjugate-beta lyase; cytoplasmic (glutamine transaminase K, kynurenine aminotransferase)|cytoplasmic cysteine conjugate-beta lyase|glutamine transaminase K|glutamine-phenylpyruvate aminotransferase|kynurenine