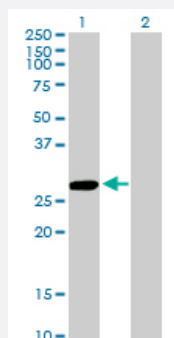


# CCBL1 monoclonal antibody (M02), clone 1B12

Catalog # H00000883-M02

Size 100 ug

## Applications

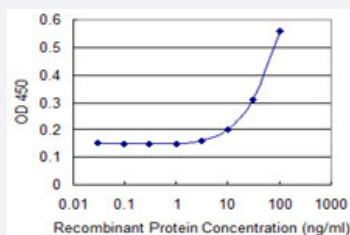


### Western Blot (Transfected lysate)

Western Blot analysis of CCBL1 expression in transfected 293T cell line by CCBL1 monoclonal antibody (M02), clone 1B12.

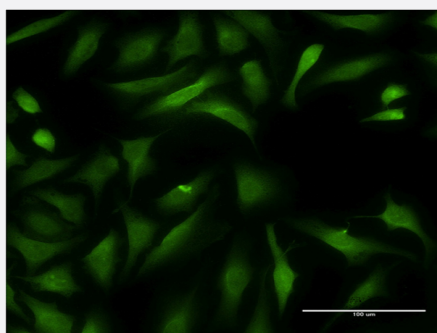
Lane 1: CCBL1 transfected lysate (27.4 KDa).

Lane 2: Non-transfected lysate.



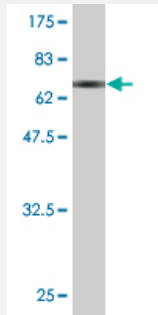
### Sandwich ELISA (Recombinant protein)

Detection limit for recombinant GST tagged CCBL1 is 3 ng/ml as a capture antibody.



### Immunofluorescence

Immunofluorescence of monoclonal antibody to CCBL1 on HeLa cell . [antibody concentration 10 ug/ml]



Western Blot detection against Immunogen (66.88 KDa) .

## Specification

<b>Product Description</b>	Mouse monoclonal antibody raised against a full-length recombinant CCBL1.
<b>Immunogen</b>	CCBL1 (AAH33685, 1 a.a. ~ 374 a.a) full-length recombinant protein with GST tag. MW of the GST tag alone is 26 KDa.
<b>Sequence</b>	MAKQLQARRLDGIDYNPWVEFVKLASEHDVVNLGQGFPDFPPPDFAVEAFQHAVSGDFMLNQY TKTFVIIIPEFFDCYEPMTMMAGGRPVFVSLKPGPIQNGELGSSSNWQLDPMELAGKFTSRTKALV LNTPNPLGKVFSSREELELVASLCQQHDVVCITDEVYQWMVYDGHQHISIASLPGMWERTLTIGSA GKTFSATGWKVGWVLGPDHIMKHLRTVHQNSVFHCPTQSQAAVAESFEREQLLFRQPSSYFVQ FPQAMQRCRDHMIRSLQSVGLKPIIPQGSYFLTIDISDFKRKMPDLPGAVDEPYDRRFVKWMIKNK GLVAIPVSIFYSVPHQKHFDHYIRFCFVKDEATLQAMDEKLRKWKVELWP
<b>Host</b>	Mouse
<b>Reactivity</b>	Human
<b>Interspecies Antigen Sequence</b>	Mouse (71); Rat (72)
<b>Isotype</b>	IgG2a Kappa
<b>Quality Control Testing</b>	Antibody Reactive Against Recombinant Protein. Western Blot detection against Immunogen (66.88 KDa) .
<b>Storage Buffer</b>	In 1x PBS, pH 7.4
<b>Storage Instruction</b>	Store at -20°C or lower. Aliquot to avoid repeated freezing and thawing.

## Applications

- Western Blot (Transfected lysate)

Western Blot analysis of CCBL1 expression in transfected 293T cell line by CCBL1 monoclonal antibody (M02), clone 1B12.

Lane 1: CCBL1 transfected lysate(27.4 KDa).

Lane 2: Non-transfected lysate.

[Protocol Download](#)

- Western Blot (Recombinant protein)

[Protocol Download](#)

- Sandwich ELISA (Recombinant protein)

Detection limit for recombinant GST tagged CCBL1 is 3 ng/ml as a capture antibody.

[Protocol Download](#)

- ELISA

- Immunofluorescence

Immunofluorescence of monoclonal antibody to CCBL1 on HeLa cell . [antibody concentration 10 ug/ml]

## Gene Info — CCBL1

Entrez GeneID [883](#)

GeneBank Accession# [BC033685](#)

Protein Accession# [AAH33685](#)

Gene Name CCBL1

Gene Alias FLJ95217, GTK, KAT1, KATI, MGC29624

Gene Description cysteine conjugate-beta lyase, cytoplasmic

Omim ID [600547](#)

Gene Ontology [Hyperlink](#)

**Gene Summary** This gene encodes a cytosolic enzyme that is responsible for the metabolism of cysteine conjugates of certain halogenated alkenes and alkanes. This metabolism can form reactive metabolites leading to nephrotoxicity and neurotoxicity. Increased levels of this enzyme have been linked to schizophrenia. Multiple transcript variants that encode different isoforms have been identified for this gene. [provided by RefSeq]

**Other Designations**

OTTHUMP00000022311|beta-lysase, kidney|cysteine conjugate-beta lyase; cytoplasmic (glutamine transaminase K, kyneurenine aminotransferase)|cytoplasmic cysteine conjugate-beta lyase|glutamine transaminase K|glutamine-phenylpyruvate aminotransferase|kyneure

---