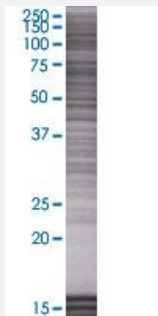


# CBFA2T3 293T Cell Transient Overexpression Lysate(Denatured)

Catalog # H00000863-T01

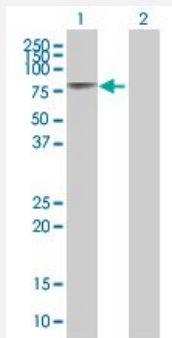
Size 100 uL

## Applications



### SDS-PAGE Gel

CBFA2T3 transfected lysate.



### Western Blot

Lane 1: CBFA2T3 transfected lysate ( 67.76 KDa)

Lane 2: Non-transfected lysate.

## Specification

|                               |                          |
|-------------------------------|--------------------------|
| Transfected Cell Line         | 293T                     |
| Plasmid                       | pCMV-CBFA2T3 full-length |
| Host                          | Human                    |
| Theoretical MW (kDa)          | 67.76                    |
| Interspecies Antigen Sequence | Mouse (81); Rat (81)     |

**Quality Control Testing**

Transient overexpression cell lysate was tested with Anti-CBFA2T3 antibody ([H00000863-B01](#)) by Western Blots.  
SDS-PAGE Gel  
CBFA2T3 transfected lysate.  
Western Blot  
Lane 1: CBFA2T3 transfected lysate ( 67.76 KDa)  
Lane 2: Non-transfected lysate.

**Storage Buffer**

1X Sample Buffer (50 mM Tris-HCl, 2% SDS, 10% glycerol, 300 mM 2-mercaptoethanol, 0.01% Bromophenol blue)

**Storage Instruction**

Store at -80°C. Aliquot to avoid repeated freezing and thawing.

## Applications

- Western Blot

## Gene Info — CBFA2T3

**Entrez GeneID**[863](#)**GeneBank Accession#**[BC062624.1](#)**Protein Accession#**[AAH62624.1](#)**Gene Name**

CBFA2T3

**Gene Alias**

ETO2, MTG16, MTGR2, ZMYND4

**Gene Description**

core-binding factor, runt domain, alpha subunit 2; translocated to, 3

**Omim ID**[603870](#)**Gene Ontology**[Hyperlink](#)**Gene Summary**

The t(16;21)(q24;q22) translocation is a rare but recurrent chromosomal abnormality associated with therapy-related myeloid malignancies. The translocation produces a chimeric gene made up of the 5'-region of the AML1 gene fused to the 3'-region of this gene. In addition, this gene is a putative breast tumor suppressor. Two transcript variants encoding different isoforms have been found for this gene, and a brefeldin A-sensitive association of RIL-alpha protein with one of the isoforms has been demonstrated in the Golgi apparatus. [provided by RefSeq]

**Other Designations**

MTG8-related gene 2|myeloid translocation gene on chromosome 16|zinc finger MYND domain-containing protein 4