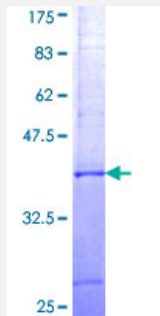


CBFA2T3 (Human) Recombinant Protein (Q01)

Catalog # H00000863-Q01

Size 25 ug, 10 ug

Applications



Specification

Product Description	Human CBFA2T3 partial ORF (NP_005178, 342 a.a. - 439 a.a.) recombinant protein with GST-tag at N-terminal.
Sequence	YRLEDIAMAHHFRDAYRHPDPRELRRERHRPLVVPGSRQEEVIDHKLTEREWAEWVKHLNLLNCI MDMVEKTRRSLTVLRRCQEADREELNHWARRY
Host	Wheat Germ (in vitro)
Theoretical MW (kDa)	36.52
Interspecies Antigen Sequence	Mouse (92); Rat (91)
Preparation Method	in vitro wheat germ expression system
Purification	Glutathione Sepharose 4 Fast Flow
Quality Control Testing	12.5% SDS-PAGE Stained with Coomassie Blue.
Storage Buffer	50 mM Tris-HCl, 10 mM reduced Glutathione, pH=8.0 in the elution buffer.
Storage Instruction	Store at -80°C. Aliquot to avoid repeated freezing and thawing.
Note	Best use within three months from the date of receipt of this protein.

Applications

- Enzyme-linked Immunoabsorbent Assay
- Western Blot (Recombinant protein)
- Antibody Production
- Protein Array

Gene Info — CBFA2T3

Entrez GeneID [863](#)

GeneBank Accession# [NM_005187](#)

Protein Accession# [NP_005178](#)

Gene Name CBFA2T3

Gene Alias ETO2, MTG16, MTGR2, ZMYND4

Gene Description core-binding factor, runt domain, alpha subunit 2; translocated to, 3

Omim ID [603870](#)

Gene Ontology [Hyperlink](#)

Gene Summary The t(16;21)(q24;q22) translocation is a rare but recurrent chromosomal abnormality associated with therapy-related myeloid malignancies. The translocation produces a chimeric gene made up of the 5'-region of the AML1 gene fused to the 3'-region of this gene. In addition, this gene is a putative breast tumor suppressor. Two transcript variants encoding different isoforms have been found for this gene, and a brefeldin A-sensitive association of RIL-alpha protein with one of the isoforms has been demonstrated in the Golgi apparatus. [provided by RefSeq]

Other Designations MTG8-related gene 2|myeloid translocation gene on chromosome 16|zinc finger MYND domain-containing protein 4