

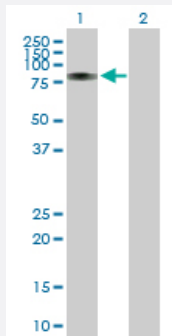
MaxPab®

# RUNX1T1 purified MaxPab rabbit polyclonal antibody (D01P)

Catalog # H00000862-D01P

Size 100 ug

## Applications

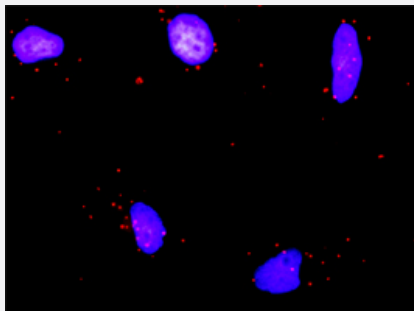


### Western Blot (Transfected lysate)

Western Blot analysis of RUNX1T1 expression in transfected 293T cell line ([H00000862-T01](#)) by RUNX1T1 MaxPab polyclonal antibody.

Lane 1: RUNX1T1 transfected lysate(64.40 KDa).

Lane 2: Non-transfected lysate.



### In situ Proximity Ligation Assay (Cell)

Proximity Ligation Analysis of protein-protein interactions between RUNX1T1 and HDAC1. HeLa cells were stained with anti-RUNX1T1 rabbit purified polyclonal 1:1200 and anti-HDAC1 mouse monoclonal antibody 1:50. Each red dot represents the detection of protein-protein interaction complex, and nuclei were counterstained with DAPI (blue).

## Specification

### Product Description

Rabbit polyclonal antibody raised against a full-length human RUNX1T1 protein.

### Immunogen

RUNX1T1 (NP\_004340.1, 1 a.a. ~ 577 a.a) full-length human protein.

|                         |   |
|-------------------------|---|
| Sequence                | MPDRTEKHSTMPDSPVDVKTQSRLTPPTMPPPPPTTQGAPRTSSFTPTTLTNGTSHSPTALNGAP<br>SPPNGFSNGPSSSSSSSLANQQLPPACGARQLSKLRFLTTLQQFGNDISPEIGERVRTLVLGLV<br>NSTLTIEEFHSKLQEATNFPLRPFVIPFLKANLPLLQRELLHCARLAKQNPAQYLAQHEQLLLDAST<br>TSPVDSSELLLDVNENGRKRTPDRTKENGFDREPLHSEHPSKRPTISPGQRYSPNNGLSYQPN<br>GLPHPTPPPPQHYRLDDMAIAHHYRDSYRHPSHRDLRDRNRPMLHGTRQEEMIDHRLTDREWA<br>EEWKHLDHLLNCIMDMVEKTRRSLTVLRRCQEADREELNYWIRRYSDAEDLKKGGGSSSSSHSRQ<br>QSPVNPDPVALDAHREFLHRPASGYVPEEWKKAEEAVNEVKRQAMTELQKAVSEAERKAHDMI<br>TTERAKMERTVAEAKRQAAEDALAVINQQEDSSESCWNCGRKASETCSGCNTARYCGSFCQHK<br>DWEKHHHICGQTLQAQQQGDTPAVSSSVTPNSGAGSPMDTPPAATPRSTTPGTPSTIETTPR |
| Host                    | Rabbit  |
| Reactivity              | Human   |
| Quality Control Testing | Antibody reactive against mammalian transfected lysate.   |
| Storage Buffer          | In 1x PBS, pH 7.4   |
| Storage Instruction     | Store at -20°C or lower. Aliquot to avoid repeated freezing and thawing.  |

## Applications

- Western Blot (Transfected lysate)

Western Blot analysis of RUNX1T1 expression in transfected 293T cell line ([H00000862-T01](#)) by RUNX1T1 MaxPab polyclonal antibody.

Lane 1: RUNX1T1 transfected lysate(64.40 KDa).

Lane 2: Non-transfected lysate.

[Protocol Download](#)

- In situ* Proximity Ligation Assay (Cell)

Proximity Ligation Analysis of protein-protein interactions between RUNX1T1 and HDAC1. HeLa cells were stained with anti-RUNX1T1 rabbit purified polyclonal 1:1200 and anti-HDAC1 mouse monoclonal antibody 1:50. Each red dot represents the detection of protein-protein interaction complex, and nuclei were counterstained with DAPI (blue).

## Gene Info — RUNX1T1

|                     |                             |
|---------------------|-----------------------------|
| Entrez GeneID       | <a href="#">862</a>         |
| GeneBank Accession# | <a href="#">NM_004349.2</a> |
| Protein Accession#  | <a href="#">NP_004340.1</a> |
| Gene Name           | RUNX1T1                     |

|                    |   |
|--------------------|---|
| Gene Alias         | AML1T1, CBFA2T1, CDR, ETO, MGC2796, MTG8, MTG8b, ZMYND2   |
| Gene Description   | runt-related transcription factor 1; translocated to, 1 (cyclin D-related)  |
| Omim ID            | <a href="#">133435</a>  |
| Gene Ontology      | <a href="#">Hyperlink</a>   |
| Gene Summary       | <p>The protein encoded by this gene is a putative zinc finger transcription factor and oncoprotein. In acute myeloid leukemia, especially in the M2 subtype, the t(8;21)(q22;q22) translocation is one of the most frequent karyotypic abnormalities. The translocation produces a chimeric gene made up of the 5'-region of the RUNX1 gene fused to the 3'-region of this gene. The chimeric protein is thought to associate with the nuclear corepressor/histone deacetylase complex to block hematopoietic differentiation. Several transcript variants encoding multiple isoforms have been found for this gene. [provided by RefSeq]</p> |
| Other Designations | acute myelogenous leukemia 1 translocation 1 protein acute myelogenous leukemia 1 translocation 1, cyclin-D related core-binding factor, runt domain, alpha subunit 2; translocated to, 1; cyclin D-related eight twenty one protein myeloid translocation gene   |

## Pathway

- [Acute myeloid leukemia](#)
- [Pathways in cancer](#)