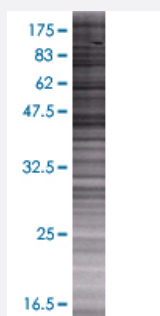


# CASQ2 293T Cell Transient Overexpression Lysate(Denatured)

Catalog # H00000845-T01

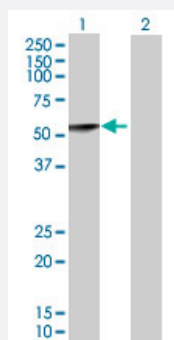
Size 100 uL

## Applications



### SDS-PAGE Gel

CASQ2 transfected lysate.



### Western Blot

Lane 1: CASQ2 transfected lysate ( 44 KDa)

Lane 2: Non-transfected lysate.

## Specification

Transfected Cell Line	293T
Plasmid	pCMV-CASQ2 full-length
Host	Human
Theoretical MW (kDa)	44
Interspecies Antigen Sequence	Mouse (91); Rat (92)

**Quality Control Testing**

Transient overexpression cell lysate was tested with Anti-CASQ2 antibody ([H00000845-B01](#)) by Western Blots.  
SDS-PAGE Gel  
CASQ2 transfected lysate.  
Western Blot  
Lane 1: CASQ2 transfected lysate ( 44 KDa)  
Lane 2: Non-transfected lysate.

**Storage Buffer**

1X Sample Buffer (50 mM Tris-HCl, 2% SDS, 10% glycerol, 300 mM 2-mercaptoethanol, 0.01% Bromophenol blue)

**Storage Instruction**

Store at -80°C. Aliquot to avoid repeated freezing and thawing.

## Applications

- Western Blot

## Gene Info — CASQ2

**Entrez GeneID**[845](#)**GeneBank Accession#**[BC022288.1](#)**Protein Accession#**[NP\\_001223.2](#)**Gene Name**

CASQ2

**Gene Alias**

FLJ26321, FLJ93514, PDIB2

**Gene Description**

calsequestrin 2 (cardiac muscle)

**Omim ID**[114251 604772](#)**Gene Ontology**[Hyperlink](#)**Gene Summary**

The protein encoded by this gene specifies the cardiac muscle family member of the calsequestrin family. Calsequestrin is localized to the sarcoplasmic reticulum in cardiac and slow skeletal muscle cells. The protein is a calcium binding protein that stores calcium for muscle function. Mutations in this gene cause stress-induced polymorphic ventricular tachycardia, also referred to as catecholaminergic polymorphic ventricular tachycardia 2 (CPVT2), a disease characterized by bidirectional ventricular tachycardia that may lead to cardiac arrest. [provided by RefSeq]

**Other Designations**

OTTHUMP00000013749|calsequestrin 2, fast-twitch, cardiac muscle|cardiac calsequestrin 2

## Disease

- [Death](#)