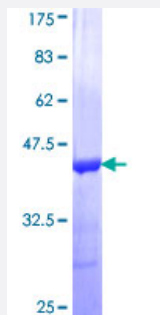


CASQ2 (Human) Recombinant Protein (Q01)

Catalog # H00000845-Q01

Size 25 ug, 10 ug

Applications



Specification

Product Description	Human CASQ2 partial ORF (NP_001223, 21 a.a. - 119 a.a.) recombinant protein with GST-tag at N-terminal.
Sequence	EGLNFPTYDGKDRVVSLSEKNFKQVLKKYDLLCLYHEPVSSDKVTPKQFQLKEMLELVAQVLE HKAIGFVMVDAKKEAKLAKKLGFDEEGSLYLKG
Host	Wheat Germ (in vitro)
Theoretical MW (kDa)	36.63
Interspecies Antigen Sequence	Mouse (89); Rat (90)
Preparation Method	in vitro wheat germ expression system
Purification	Glutathione Sepharose 4 Fast Flow
Quality Control Testing	12.5% SDS-PAGE Stained with Coomassie Blue.
Storage Buffer	50 mM Tris-HCl, 10 mM reduced Glutathione, pH=8.0 in the elution buffer.
Storage Instruction	Store at -80°C. Aliquot to avoid repeated freezing and thawing.
Note	Best use within three months from the date of receipt of this protein.

Applications

- Enzyme-linked Immunoabsorbent Assay
- Western Blot (Recombinant protein)
- Antibody Production
- Protein Array

Gene Info — CASQ2

Entrez GeneID	845
GeneBank Accession#	NM_001232
Protein Accession#	NP_001223
Gene Name	CASQ2
Gene Alias	FLJ26321, FLJ93514, PDIB2
Gene Description	calsequestrin 2 (cardiac muscle)
Omim ID	114251 604772
Gene Ontology	Hyperlink
Gene Summary	The protein encoded by this gene specifies the cardiac muscle family member of the calsequestrin family. Calsequestrin is localized to the sarcoplasmic reticulum in cardiac and slow skeletal muscle cells. The protein is a calcium binding protein that stores calcium for muscle function. Mutations in this gene cause stress-induced polymorphic ventricular tachycardia, also referred to as catecholaminergic polymorphic ventricular tachycardia 2 (CPVT2), a disease characterized by bidirectional ventricular tachycardia that may lead to cardiac arrest. [provided by RefSeq]
Other Designations	OTTHUMP00000013749 calsequestrin 2, fast-twitch, cardiac muscle cardiac calsequestrin 2

Disease

- [Death](#)