

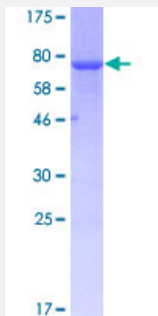
Full-Length

CASQ2 (Human) Recombinant Protein (P01)

Catalog # H00000845-P01

Size 25 ug, 10 ug

Applications



Specification

Product Description

Human CASQ2 full-length ORF (AAH22288, 20 a.a. - 399 a.a.) recombinant protein with GST-tag at N-terminal.

Sequence

EEGLNFPTYDGKDRVVSLSSEKNFKQVLKKYDLLCLYYHEPVSSDKVTQKQFQLKEIVLELVAQVL
EHKAIGFVMVDAKKEAKLAKKLGFDEEGSLYLKGDRTIEFDGEFAADVLVEFLDLIEDPVEISSK
LEVQAFERIEDYIKLIGFFKSEDSEYYKAFEEAAEHFQPYKFFATFDKGVAKKLSLKMNEVDFYEP
FMDEPIAIPNKPYTEELVEFVKEHQRPTLRRLRPEEMFETWEDDLNGIHVAFAEKSDPDGYEFL
EILKQVARDNTDNPDLNILWIDPDDFPLLVAWEKTFKIDLFRPQIGVVNVTADSVWMEIPDDDD
LPTAELEDWIEDVLGKINTEDDDDDDDDDNSDEEDNDDSDDDDDDE

Host

Wheat Germ (in vitro)

Theoretical MW (kDa)

67.54

Interspecies Antigen Sequence

Mouse (93); Rat (94)

Preparation Method

[in vitro wheat germ expression system](#)

Purification

Glutathione Sepharose 4 Fast Flow

Quality Control Testing

12.5% SDS-PAGE Stained with Coomassie Blue.

Storage Buffer

50 mM Tris-HCl, 10 mM reduced Glutathione, pH=8.0 in the elution buffer.

Storage Instruction

Store at -80°C. Aliquot to avoid repeated freezing and thawing.

Note

Best use within three months from the date of receipt of this protein.

Applications

- Enzyme-linked Immunoabsorbent Assay
- Western Blot (Recombinant protein)
- Antibody Production
- Protein Array

Gene Info — CASQ2

Entrez GeneID[845](#)**GeneBank Accession#**[BC022288](#)**Protein Accession#**[AAH22288](#)**Gene Name**

CASQ2

Gene Alias

FLJ26321, FLJ93514, PDIB2

Gene Description

calsequestrin 2 (cardiac muscle)

Omim ID[114251 604772](#)**Gene Ontology**[Hyperlink](#)**Gene Summary**

The protein encoded by this gene specifies the cardiac muscle family member of the calsequestrin family. Calsequestrin is localized to the sarcoplasmic reticulum in cardiac and slow skeletal muscle cells. The protein is a calcium binding protein that stores calcium for muscle function. Mutations in this gene cause stress-induced polymorphic ventricular tachycardia, also referred to as catecholaminergic polymorphic ventricular tachycardia 2 (CPVT2), a disease characterized by bidirectional ventricular tachycardia that may lead to cardiac arrest. [provided by RefSeq]

Other Designations

OTTHUMP00000013749|calsequestrin 2, fast-twitch, cardiac muscle|cardiac calsequestrin 2

Disease

- [Death](#)