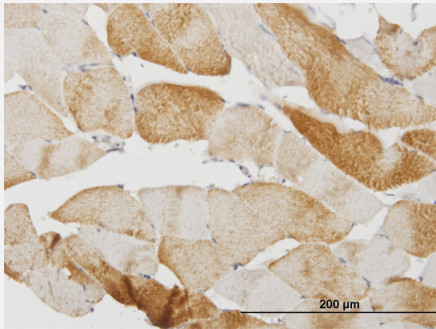


# CASQ2 monoclonal antibody (M07), clone 1C6

Catalog # H00000845-M07

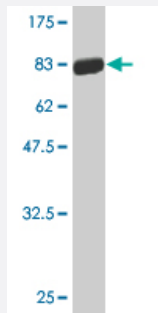
Size 100 ug

## Applications



### Immunohistochemistry (Formalin/PFA-fixed paraffin-embedded sections)

Immunoperoxidase of monoclonal antibody to CASQ2 on formalin-fixed paraffin-embedded human skeletal muscle. [antibody concentration 3 ug/ml]



Western Blot detection against Immunogen (67.54 KDa) .

## Specification

### Product Description

Mouse monoclonal antibody raised against a full-length recombinant CASQ2.

### Immunogen

CASQ2 (AAH22288, 20 a.a. ~ 399 a.a) full-length recombinant protein with GST tag. MW of the GST tag alone is 26 KDa.

### Sequence

EEGLNFPTYDGKDRVVSLSEKNFKQVLKKYDLLCLYHEPVSSDKVTQKQFQLKEIMLELVAQVL  
EHKAIGFVMVDAKKEAKLAKKLGFDEEGSLYLKGDRTIEFDGEFAADVLEFLLDLIEDPVEIISK  
LEVQAFERIEDYIKLIGFFKSEDSEYYKAFEEAAEHFQPYKFFATFDKGVAKKLSLKMNEVDFYEP  
FMDEPIAPNKPYTEELVEFVKEHQRPTLRRRLPEEMFETWEDDLNGIHVAFAEKSDPDGYEFL  
EILKQVARDNTDNPDLNILWIDPDDFPLLVAWYWEKTFKIDLFRPQIGVVNVTADSVWMEIPDDDD  
LPTAELEDWIEDVLSGKINTEDDDDDDDDDNSDEEDNDDSDDDDDDE

### Host

Mouse

Reactivity	Human
Interspecies Antigen Sequence	Mouse (93); Rat (94)
Isotype	IgG2b Kappa
Quality Control Testing	Antibody Reactive Against Recombinant Protein. Western Blot detection against Immunogen (67.54 KDa) .
Storage Buffer	In 1x PBS, pH 7.4
Storage Instruction	Store at -20°C or lower. Aliquot to avoid repeated freezing and thawing.

## Applications

- Western Blot (Recombinant protein)

[Protocol Download](#)

- Immunohistochemistry (Formalin/PFA-fixed paraffin-embedded sections)

Immunoperoxidase of monoclonal antibody to CASQ2 on formalin-fixed paraffin-embedded human skeletal muscle. [antibody concentration 3 ug/ml]

[Protocol Download](#)

- ELISA

## Gene Info — CASQ2

Entrez GeneID	<a href="#">845</a>
GeneBank Accession#	<a href="#">BC022288</a>
Protein Accession#	<a href="#">AAH22288</a>
Gene Name	CASQ2
Gene Alias	FLJ26321, FLJ93514, PDIB2
Gene Description	calsequestrin 2 (cardiac muscle)
Omim ID	<a href="#">114251 604772</a>
Gene Ontology	<a href="#">Hyperlink</a>

**Gene Summary**

The protein encoded by this gene specifies the cardiac muscle family member of the calsequestrin family. Calsequestrin is localized to the sarcoplasmic reticulum in cardiac and slow skeletal muscle cells. The protein is a calcium binding protein that stores calcium for muscle function. Mutations in this gene cause stress-induced polymorphic ventricular tachycardia, also referred to as catecholaminergic polymorphic ventricular tachycardia 2 (CPVT2), a disease characterized by bidirectional ventricular tachycardia that may lead to cardiac arrest. [provided by RefSeq]

**Other Designations**

OTTHUMP00000013749|calsequestrin 2, fast-twitch, cardiac muscle|cardiac calsequestrin 2

**Disease**

- [Death](#)