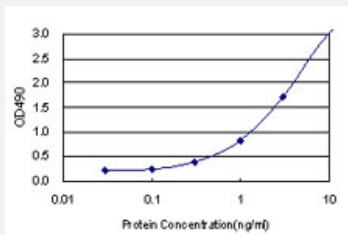


# CASQ2 (Human) Matched Antibody Pair

Catalog # H00000845-AP11

Size 1 Set

## Applications



Sandwich ELISA detection sensitivity ranging from 0.03 ng/ml to 100 ng/ml.

## Specification

<b>Product Description</b>	This antibody pair set comes with a matched antibody pair to detect and quantify the protein level of human CASQ2.
<b>Reactivity</b>	Human
<b>Interspecies Antigen Sequence</b>	Mouse (88%); Rat (88%)
<b>Quality Control Testing</b>	Standard curve using recombinant protein ( H00000845-P01 ) as an analyte. Sandwich ELISA detection sensitivity ranging from 0.03 ng/ml to 100 ng/ml.
<b>Supplied Product</b>	Antibody pair set content: 1. Capture antibody: rabbit MaxPab® affinity purified polyclonal anti-CASQ2 (100 ug) 2. Detection antibody: mouse monoclonal anti-CASQ2, IgG2b Kappa (20 ug) *Reagents are sufficient for at least 1-2 x 96 well plates using recommended protocols.
<b>Storage Instruction</b>	Store reagents of the antibody pair set at -20°C or lower. Please aliquot to avoid repeated freeze thaw cycle. Reagents should be returned to -20°C storage immediately after use.

## Applications

- ELISA Pair (Recombinant protein)

[Protocol Download](#)

## Gene Info — CASQ2

Entrez GeneID	<a href="#">845</a>
Gene Name	CASQ2
Gene Alias	FLJ26321, FLJ93514, PDIB2
Gene Description	calsequestrin 2 (cardiac muscle)
Omim ID	<a href="#">114251 604772</a>
Gene Ontology	<a href="#">Hyperlink</a>
Gene Summary	The protein encoded by this gene specifies the cardiac muscle family member of the calsequestrin family. Calsequestrin is localized to the sarcoplasmic reticulum in cardiac and slow skeletal muscle cells. The protein is a calcium binding protein that stores calcium for muscle function. Mutations in this gene cause stress-induced polymorphic ventricular tachycardia, also referred to as catecholaminergic polymorphic ventricular tachycardia 2 (CPVT2), a disease characterized by bidirectional ventricular tachycardia that may lead to cardiac arrest. [provided by RefSeq]
Other Designations	OTTHUMP00000013749 calsequestrin 2, fast-twitch, cardiac muscle cardiac calsequestrin 2

## Disease

- [Death](#)