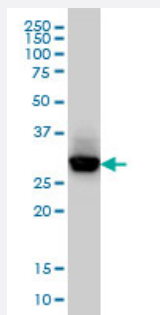


# CAPZB monoclonal antibody (M03), clone 4H8

Catalog # H00000832-M03

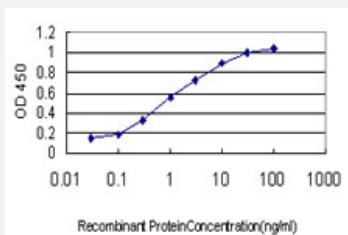
Size 100 ug

## Applications



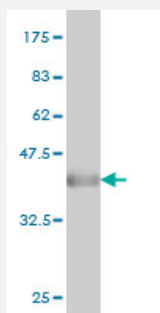
### Western Blot (Cell lysate)

CAPZB monoclonal antibody (M03), clone 4H8 Western Blot analysis of CAPZB expression in HeLa ( Cat # L013V1 ).



### Sandwich ELISA (Recombinant protein)

Detection limit for recombinant GST tagged CAPZB is approximately 0.1ng/ml as a capture antibody.



Western Blot detection against Immunogen (34.65 KDa) .

## Specification

### Product Description

Mouse monoclonal antibody raised against a partial recombinant CAPZB.

Immunogen	CAPZB (NP_004921, 192 a.a. ~ 272 a.a) partial recombinant protein with GST tag. MW of the GST tag alone is 26 KDa.
Sequence	SLTRQMEKDETVSDCSPHIANIGRLVEDMENKIRSTLNEYFGKTKDIVNGLRSVQTFADKSKQEAL KNDLVEALKRKQQC
Host	Mouse
Reactivity	Human
Isotype	IgG2a Kappa
Quality Control Testing	Antibody Reactive Against Recombinant Protein. Western Blot detection against Immunogen (34.65 KDa) .
Storage Buffer	In 1x PBS, pH 7.4
Storage Instruction	Store at -20°C or lower. Aliquot to avoid repeated freezing and thawing.

## Applications

- Western Blot (Cell lysate)

CAPZB monoclonal antibody (M03), clone 4H8 Western Blot analysis of CAPZB expression in HeLa ( Cat # L013V1 ).

[Protocol Download](#)

- Western Blot (Recombinant protein)

[Protocol Download](#)

- Sandwich ELISA (Recombinant protein)

Detection limit for recombinant GST tagged CAPZB is approximately 0.1ng/ml as a capture antibody.

[Protocol Download](#)

- ELISA

## Gene Info — CAPZB

Entrez GeneID	<a href="#">832</a>
GeneBank Accession#	<a href="#">NM_004930</a>
Protein Accession#	<a href="#">NP_004921</a>

Gene Name	CAPZB
Gene Alias	CAPB, CAPPB, CAPZ, MGC104401, MGC129749, MGC129750
Gene Description	capping protein (actin filament) muscle Z-line, beta
Omim ID	<a href="#">601572</a>
Gene Ontology	<a href="#">Hyperlink</a>
Gene Summary	CAPZB is a member of the F-actin capping protein family. This gene encodes the beta subunit of the barbed-end actin binding protein. The protein regulates growth of the actin filament by capping the barbed end of growing actin filaments. [provided by RefSeq]
Other Designations	Cap Z F-actin capping protein beta subunit

## Publication Reference

- [The study of protein biomarkers to understand the biochemical processes underlying beef color development in young bulls.](#)

Gagaoua M, Terlouw EMC, Picard B.

Meat Science 2017 Jul; 134:18.

Application: Dot, Bovine, Bovine muscle

- [Inverse relationships between biomarkers and beef tenderness according to contractile and metabolic properties of the muscle.](#)

Picard B, Gagaoua M, Micol D, Cassar-Malek I, Hocquette JF, Terlouw CE.

Journal of Agricultural and Food Chemistry 2014 Oct; 62(40):9808.

Application: Dot, Bovine, Bovine muscle

- [Functional analysis of beef tenderness.](#)

Guillemin N, Bonnet M, Jurie C, Picard B.

Journal of Proteomics 2011 Dec; 75(2):352.

Application: WB-Ti, Bovine, Bovine tenderness

## Disease

- [Tobacco Use Disorder](#)