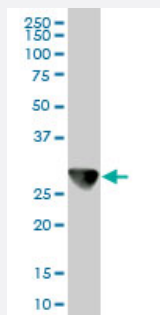


# CAPZB monoclonal antibody (M02), clone 1H1

Catalog # H00000832-M02

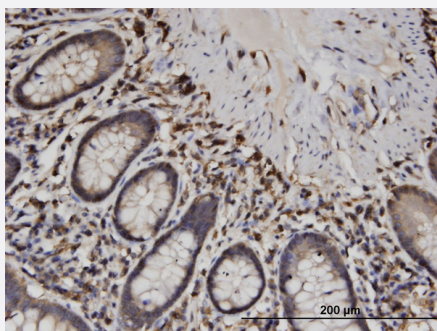
Size 100 ug

## Applications



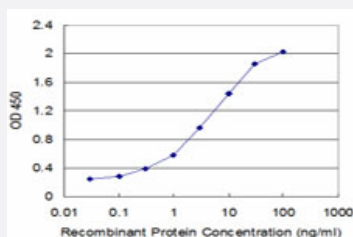
### Western Blot (Cell lysate)

CAPZB monoclonal antibody (M02), clone 1H1. Western Blot analysis of CAPZB expression in HeLa ( Cat # L013V1 ).



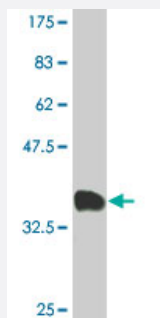
### Immunohistochemistry (Formalin/PFA-fixed paraffin-embedded sections)

Immunoperoxidase of monoclonal antibody to CAPZB on formalin-fixed paraffin-embedded human small Intestine. [antibody concentration 1.5 ug/ml]



### Sandwich ELISA (Recombinant protein)

Detection limit for recombinant GST tagged CAPZB is approximately 0.1ng/ml as a capture antibody.



Western Blot detection against Immunogen (34.65 KDa) .

## Specification

<b>Product Description</b>	Mouse monoclonal antibody raised against a partial recombinant CAPZB.
<b>Immunogen</b>	CAPZB (NP_004921, 192 a.a. ~ 272 a.a) partial recombinant protein with GST tag. MW of the GST tag alone is 26 KDa.
<b>Sequence</b>	SLTRQMEKDETVSDCSPHIANIGRLVEDMENKIRSTLNEIFYGKTKDIVNGLRSVQTFADKSKQEAL KNDLVEALKRKQQC
<b>Host</b>	Mouse
<b>Reactivity</b>	Human
<b>Isotype</b>	IgG2a Kappa
<b>Quality Control Testing</b>	Antibody Reactive Against Recombinant Protein. Western Blot detection against Immunogen (34.65 KDa) .
<b>Storage Buffer</b>	In 1x PBS, pH 7.4
<b>Storage Instruction</b>	Store at -20°C or lower. Aliquot to avoid repeated freezing and thawing.

## Applications

- Western Blot (Cell lysate)

CAPZB monoclonal antibody (M02), clone 1H1. Western Blot analysis of CAPZB expression in HeLa ( Cat # L013V1 ).

[Protocol Download](#)

- Western Blot (Recombinant protein)

[Protocol Download](#)

- Immunohistochemistry (Formalin/PFA-fixed paraffin-embedded sections)

Immunoperoxidase of monoclonal antibody to CAPZB on formalin-fixed paraffin-embedded human small Intestine. [antibody concentration 1.5 ug/ml]

[Protocol Download](#)

- Sandwich ELISA (Recombinant protein)

Detection limit for recombinant GST tagged CAPZB is approximately 0.1ng/ml as a capture antibody.

[Protocol Download](#)

- ELISA

## Gene Info — CAPZB

Entrez GeneID [832](#)

GeneBank Accession# [NM\\_004930](#)

Protein Accession# [NP\\_004921](#)

Gene Name CAPZB

Gene Alias CAPB, CAPPB, CAPZ, MGC104401, MGC129749, MGC129750

Gene Description capping protein (actin filament) muscle Z-line, beta

Omim ID [601572](#)

Gene Ontology [Hyperlink](#)

**Gene Summary** CAPZB is a member of the F-actin capping protein family. This gene encodes the beta subunit of the barbed-end actin binding protein. The protein regulates growth of the actin filament by capping the barbed end of growing actin filaments. [provided by RefSeq]

**Other Designations** Cap Z[F-actin capping protein beta subunit

## Disease

- [Tobacco Use Disorder](#)