

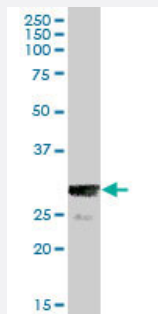
MaxPab®

CAPZB MaxPab mouse polyclonal antibody (B01P)

Catalog # H00000832-B01P

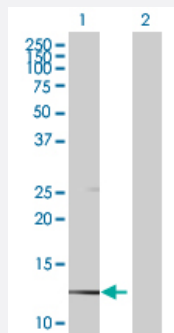
Size 50 ug

Applications



Western Blot (Tissue lysate)

CAPZB MaxPab polyclonal antibody. Western Blot analysis of CAPZB expression in human placenta.



Western Blot (Transfected lysate)

Western Blot analysis of CAPZB expression in transfected 293T cell line ([H00000832-T01](#)) by CAPZB MaxPab polyclonal antibody.

Lane 1: CAPZB transfected lysate(8.69 KDa).

Lane 2: Non-transfected lysate.

Specification

Product Description	Mouse polyclonal antibody raised against a full-length human CAPZB protein.
Immunogen	CAPZB (AAH08095.1, 1 a.a. ~ 79 a.a) full-length human protein.
Sequence	MLNLCFMLTRHAVHSLDSFLRKLVFCSLPSSLPSPGTGHITAASLTAQRHLSLRKPIATLLRLRACF CHTSLSVLSTFP
Host	Mouse
Reactivity	Human
Quality Control Testing	Antibody reactive against mammalian transfected lysate.

Storage Buffer

In 1x PBS, pH 7.4

Storage Instruction

Store at -20°C or lower. Aliquot to avoid repeated freezing and thawing.

Applications

- Western Blot (Tissue lysate)

CAPZB MaxPab polyclonal antibody. Western Blot analysis of CAPZB expression in human placenta.

[Protocol Download](#)

- Western Blot (Transfected lysate)

Western Blot analysis of CAPZB expression in transfected 293T cell line ([H00000832-T01](#)) by CAPZB MaxPab polyclonal antibody.

Lane 1: CAPZB transfected lysate(8.69 KDa).

Lane 2: Non-transfected lysate.

[Protocol Download](#)

Gene Info — CAPZB

Entrez GeneID[832](#)**GeneBank Accession#**[BC008095.1](#)**Protein Accession#**[AAH08095.1](#)**Gene Name**

CAPZB

Gene Alias

CAPB, CAPPB, CAPZ, MGC104401, MGC129749, MGC129750

Gene Description

capping protein (actin filament) muscle Z-line, beta

Omim ID[601572](#)**Gene Ontology**[Hyperlink](#)**Gene Summary**

CAPZB is a member of the F-actin capping protein family. This gene encodes the beta subunit of the barbed-end actin binding protein. The protein regulates growth of the actin filament by capping the barbed end of growing actin filaments. [provided by RefSeq]

Other Designations

Cap Z|F-actin capping protein beta subunit

Disease

- [Tobacco Use Disorder](#)