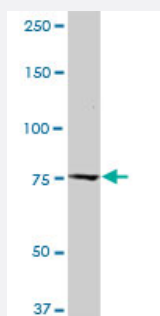


CAST monoclonal antibody (M03), clone 2C5

Catalog # H00000831-M03

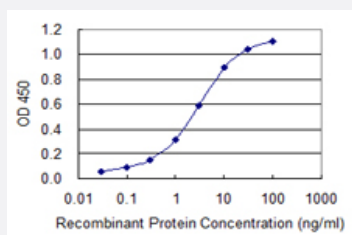
Size 100 ug

Applications



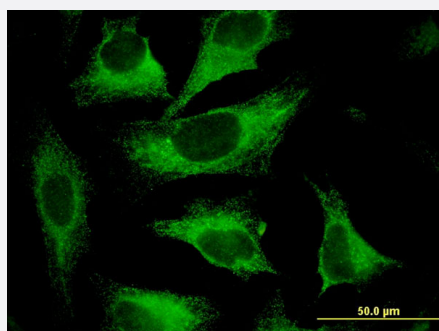
Western Blot (Cell lysate)

CAST monoclonal antibody (M03), clone 2C5. Western Blot analysis of CAST expression in NIH/3T3 (Cat # L018V1).



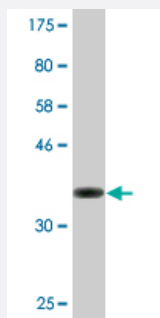
Sandwich ELISA (Recombinant protein)

Detection limit for recombinant GST tagged CAST is 0.03 ng/ml as a capture antibody.



Immunofluorescence

Immunofluorescence of monoclonal antibody to CAST on HeLa cell . [antibody concentration 10 ug/ml]



Western Blot detection against Immunogen (35.42 KDa) .

Specification

Product Description	Mouse monoclonal antibody raised against a partial recombinant CAST.
Immunogen	CAST (NP_001741.3, 582 a.a. ~ 669 a.a) partial recombinant protein with GST tag. MW of the GST tag alone is 26 KDa.
Sequence	QPDPDENKPMEDKVKEKAKAEHRDKLGERDDTIPPEYRHLLDDNGQDKPVKPPTKKSEDSKKP ADDQDPIDALSGDLDCPSTTETSQ
Host	Mouse
Reactivity	Human, Mouse
Isotype	IgG1 Kappa
Quality Control Testing	Antibody Reactive Against Recombinant Protein. Western Blot detection against Immunogen (35.42 KDa) .
Storage Buffer	In 1x PBS, pH 7.4
Storage Instruction	Store at -20°C or lower. Aliquot to avoid repeated freezing and thawing.

Applications

- Western Blot (Cell lysate)

CAST monoclonal antibody (M03), clone 2C5. Western Blot analysis of CAST expression in NIH/3T3 (Cat # L018V1).

[Protocol Download](#)

- Western Blot (Recombinant protein)

[Protocol Download](#)

- Sandwich ELISA (Recombinant protein)

Detection limit for recombinant GST tagged CAST is 0.03 ng/ml as a capture antibody.

[Protocol Download](#)

- ELISA

- Immunofluorescence

Immunofluorescence of monoclonal antibody to CAST on HeLa cell . [antibody concentration 10 ug/ml]

Gene Info — CAST

Entrez GeneID [831](#)

GeneBank Accession# [NM_001750](#)

Protein Accession# [NP_001741.3](#)

Gene Name CAST

Gene Alias BS-17, MGC9402

Gene Description calpastatin

Omim ID [114090](#)

Gene Ontology [Hyperlink](#)

Gene Summary

The protein encoded by this gene is an endogenous calpain (calcium-dependent cysteine protease) inhibitor. It consists of an N-terminal domain L and four repetitive calpain-inhibition domains (domains 1-4), and it is involved in the proteolysis of amyloid precursor protein. The calpain/calpastatin system is involved in numerous membrane fusion events, such as neural vesicle exocytosis and platelet and red-cell aggregation. The encoded protein is also thought to affect the expression levels of genes encoding structural or regulatory proteins. Several alternatively spliced transcript variants of this gene have been described, but the full-length nature of only some have been determined. [provided by RefSeq]

Other Designations OTTHUMP00000158519|OTTHUMP00000158520|calpain inhibitor|heart-type calpastatin|sperm BS-17 component

Disease

- [Alzheimer disease](#)

- [Cardiovascular Diseases](#)
- [Diabetes Mellitus](#)
- [Edema](#)
- [Hypertension](#)
- [Multiple Sclerosis](#)
- [Obesity](#)
- [Parkinson disease](#)
- [Tobacco Use Disorder](#)