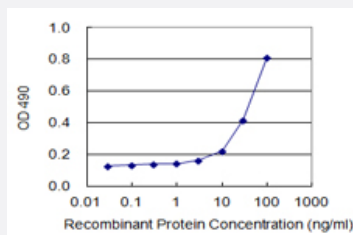


CAST (Human) Matched Antibody Pair

Catalog # H00000831-AP22

Size 1 Set

Applications



Sandwich ELISA detection sensitivity ranging from 3 ng/ml to 100 ng/ml.

Specification

Product Description	This antibody pair set comes with a matched antibody pair to detect and quantify the protein level of human CAST.
Reactivity	Human
Quality Control Testing	Standard curve using recombinant protein (H00000831-P01) as an analyte. Sandwich ELISA detection sensitivity ranging from 3 ng/ml to 100 ng/ml.
Supplied Product	Antibody pair set content: 1. Capture antibody: rabbit MaxPab® affinity purified polyclonal anti-CAST (100 ug) 2. Detection antibody: mouse purified polyclonal anti-CAST (20 ug) *Reagents are sufficient for at least 1-2 x 96 well plates using recommended protocols.
Storage Instruction	Store reagents of the antibody pair set at -20°C or lower. Please aliquot to avoid repeated freeze thaw cycle. Reagents should be returned to -20°C storage immediately after use.

Applications

- ELISA Pair (Recombinant protein)

[Protocol Download](#)

Gene Info — CAST

Entrez GeneID	831
Gene Name	CAST
Gene Alias	BS-17, MGC9402
Gene Description	calpastatin
Omim ID	114090
Gene Ontology	Hyperlink
Gene Summary	<p>The protein encoded by this gene is an endogenous calpain (calcium-dependent cysteine protease) inhibitor. It consists of an N-terminal domain L and four repetitive calpain-inhibition domains (domains 1-4), and it is involved in the proteolysis of amyloid precursor protein. The calpain/calpastatin system is involved in numerous membrane fusion events, such as neural vesicle exocytosis and platelet and red-cell aggregation. The encoded protein is also thought to affect the expression levels of genes encoding structural or regulatory proteins. Several alternatively spliced transcript variants of this gene have been described, but the full-length nature of only some have been determined. [provided by RefSeq]</p>
Other Designations	OTTHUMP00000158519 OTTHUMP00000158520 calpain inhibitor heart-type calpastatin sperm BS-17 component

Disease

- [Alzheimer disease](#)
- [Cardiovascular Diseases](#)
- [Diabetes Mellitus](#)
- [Edema](#)
- [Hypertension](#)
- [Multiple Sclerosis](#)
- [Obesity](#)
- [Parkinson disease](#)
- [Tobacco Use Disorder](#)