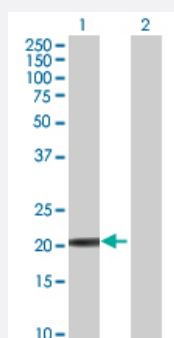


# CAPS 293T Cell Transient Overexpression Lysate(Denatured)

Catalog # H00000828-T01

Size 100 uL

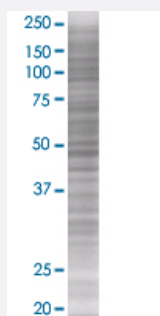
## Applications



### Western Blot

Lane 1: CAPS transfected lysate ( 21 KDa)

Lane 2: Non-transfected lysate.



### SDS-PAGE Gel

CAPS transfected lysate.

## Specification

**Transfected Cell Line** 293T

**Plasmid** pCMV-CAPS full-length

**Host** Human

**Theoretical MW (kDa)** 20.9

**Quality Control Testing** Transient overexpression cell lysate was tested with Anti-CAPS antibody ([H00000828-B01](#)) by Western Blots.  
Western Blot  
Lane 1: CAPS transfected lysate ( 21 KDa)  
Lane 2: Non-transfected lysate.  
SDS-PAGE Gel  
CAPS transfected lysate.

<b>Storage Buffer</b>	1X Sample Buffer (50 mM Tris-HCl, 2% SDS, 10% glycerol, 300 mM 2-mercaptoethanol, 0.01% Bromophenol blue)
<b>Storage Instruction</b>	Store at -80°C. Aliquot to avoid repeated freezing and thawing.

## Applications

- Western Blot

## Gene Info — CAPS

<b>Entrez GeneID</b>	<a href="#">828</a>
<b>GeneBank Accession#</b>	<a href="#">NM_004058</a>
<b>Protein Accession#</b>	<a href="#">NP_004049</a>
<b>Gene Name</b>	CAPS
<b>Gene Alias</b>	CAPS1, MGC126562
<b>Gene Description</b>	calcyphosine
<b>Omim ID</b>	<a href="#">114212</a>
<b>Gene Ontology</b>	<a href="#">Hyperlink</a>
<b>Gene Summary</b>	This gene encodes a calcium-binding protein, which may play a role in the regulation of ion transport. A similar protein was first described as a potentially important regulatory protein in the dog thyroid and was termed as R2D5 antigen in rabbit. Alternative splicing of this gene generates two transcript variants. [provided by RefSeq]
<b>Other Designations</b>	calcyphosine 1 thyroid protein p24

## Disease

- [Anorexia Nervosa](#)
- [Bulimia](#)
- [Genetic Predisposition to Disease](#)