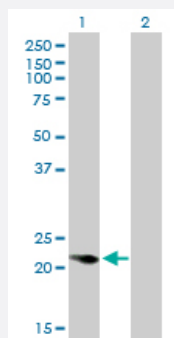


CAPS monoclonal antibody (M01), clone 4C6

Catalog # H00000828-M01

Size 100 ug

Applications

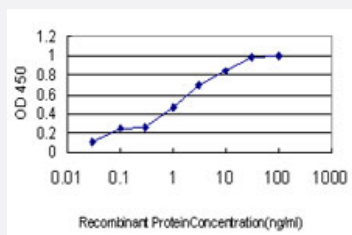


Western Blot (Transfected lysate)

Western Blot analysis of CAPS expression in transfected 293T cell line by CAPS monoclonal antibody (M01), clone 4C6.

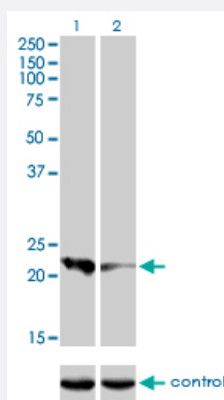
Lane 1: CAPS transfected lysate (21 kDa).

Lane 2: Non-transfected lysate.



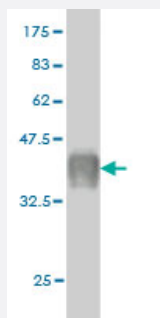
Sandwich ELISA (Recombinant protein)

Detection limit for recombinant GST tagged CAPS is approximately 0.03 ng/ml as a capture antibody.



RNAi Knockdown (Antibody validated)

Western blot analysis of CAPS over-expressed 293 cell line, cotransfected with CAPS Validated Chimera RNAi (Cat # H00000828-R01V) (Lane 2) or non-transfected control (Lane 1). Blot probed with CAPS monoclonal antibody (M01), clone 4C6 (Cat # H00000828-M01). GAPDH (36.1 kDa) used as specificity and loading control.



Western Blot detection against Immunogen (37.73 KDa) .

Specification

Product Description	Mouse monoclonal antibody raised against a partial recombinant CAPS.
Immunogen	CAPS (NP_004049, 1 a.a. ~ 109 a.a) partial recombinant protein with GST tag. MW of the GST tag alone is 26 KDa.
Sequence	MDAVDATMEKLRAQCLSRGASGIQGLARFFRQLDRDGSRSLDADEFRQGLAKLGLVLDQAEAE GVCRKWDRNGSGTLDLEEFRLRALRPPMSQAREAVIAAAFAKLDRSG
Host	Mouse
Reactivity	Human
Isotype	IgG1 Kappa
Quality Control Testing	Antibody Reactive Against Recombinant Protein. Western Blot detection against Immunogen (37.73 KDa) .
Storage Buffer	In 1x PBS, pH 7.4
Storage Instruction	Store at -20°C or lower. Aliquot to avoid repeated freezing and thawing.

Applications

- Western Blot (Transfected lysate)

Western Blot analysis of CAPS expression in transfected 293T cell line by CAPS monoclonal antibody (M01), clone 4C6.

Lane 1: CAPS transfected lysate(21 KDa).

Lane 2: Non-transfected lysate.

[Protocol Download](#)

- Western Blot (Recombinant protein)

[Protocol Download](#)

- Sandwich ELISA (Recombinant protein)

Detection limit for recombinant GST tagged CAPS is approximately 0.03ng/ml as a capture antibody.

[Protocol Download](#)

- ELISA

- RNAi Knockdown (Antibody validated)

Western blot analysis of CAPS over-expressed 293 cell line, cotransfected with CAPS Validated Chimera RNAi (Cat # H00000828-R01V) (Lane 2) or non-transfected control (Lane 1). Blot probed with CAPS monoclonal antibody (M01), clone 4C6 (Cat # H00000828-M01). GAPDH (36.1 kDa) used as specificity and loading control.

[Protocol Download](#)

Gene Info — CAPS

Entrez GeneID [828](#)

GeneBank Accession# [NM_004058](#)

Protein Accession# [NP_004049](#)

Gene Name CAPS

Gene Alias CAPS1, MGC126562

Gene Description calcyphosine

Omim ID [114212](#)

Gene Ontology [Hyperlink](#)

Gene Summary This gene encodes a calcium-binding protein, which may play a role in the regulation of ion transport. A similar protein was first described as a potentially important regulatory protein in the dog thyroid and was termed as R2D5 antigen in rabbit. Alternative splicing of this gene generates two transcript variants. [provided by RefSeq]

Other Designations calcyphosine 1|thyroid protein p24

Publication Reference

- [Identification of Novel Biomarkers in Pediatric Primitive Neuroectodermal Tumors and Ependymomas by Proteome-Wide Analysis.](#)

de Bont JM, den Boer ML, Kros JM, Passier MM, Reddingius RE, Smitt PA, Luijckx TM, Pieters R.

Journal of Neuropathology and Experimental Neurology 2007 Jun; 66(6):505.

Application: IHC, Human, Brain

Disease

- [Anorexia Nervosa](#)
- [Bulimia](#)
- [Genetic Predisposition to Disease](#)