

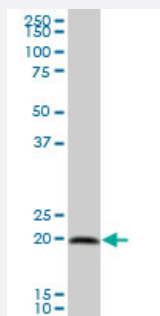
MaxPab®

CAPS purified MaxPab mouse polyclonal antibody (B01P)

Catalog # H00000828-B01P

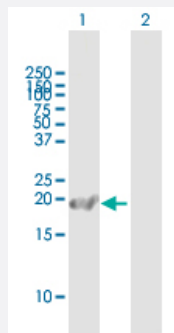
Size 50 ug

Applications



Western Blot (Tissue lysate)

CAPS MaxPab polyclonal antibody. Western Blot analysis of CAPS expression in human pancreas.

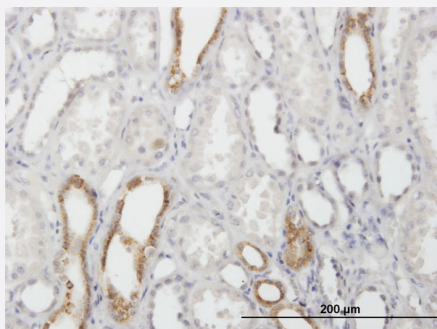


Western Blot (Transfected lysate)

Western Blot analysis of CAPS expression in transfected 293T cell line ([H00000828-T01](#)) by CAPS MaxPab polyclonal antibody.

Lane 1: CAPS transfected lysate(20.79 KDa).

Lane 2: Non-transfected lysate.



Immunohistochemistry (Formalin/PFA-fixed paraffin-embedded sections)

Immunoperoxidase of purified MaxPab antibody to CAPS on formalin-fixed paraffin-embedded human kidney. [antibody concentration 3 ug/ml]

Specification

Product Description

Mouse polyclonal antibody raised against a full-length human CAPS protein.

Immunogen	CAPS (NP_004049.1, 1 a.a. ~ 189 a.a) full-length human protein.
Sequence	MDAVDATMEKLRAQCLSRGASGIQGLARFFRQLDRDGSRLDADEFRRQGLAKLGLVLDQAEAE GVCRKWDRNGSGTLDLEEFRLALRPPMSQAREAVIAAAFAKLD RSGDGVVTVDL RGVYSGRA HPKVRSGEWTEDEVLRRLDNFDSSEKDGQVTLAEFQDYYSGV SASMNTDEEFVAMMTSAWQ L
Host	Mouse
Reactivity	Human
Quality Control Testing	Antibody reactive against mammalian transfected lysate.
Storage Buffer	In 1x PBS, pH 7.4
Storage Instruction	Store at -20°C or lower. Aliquot to avoid repeated freezing and thawing.

Applications

- Western Blot (Tissue lysate)

CAPS MaxPab polyclonal antibody. Western Blot analysis of CAPS expression in human pancreas.

[Protocol Download](#)

- Western Blot (Transfected lysate)

Western Blot analysis of CAPS expression in transfected 293T cell line ([H00000828-T01](#)) by CAPS MaxPab polyclonal antibody.

Lane 1: CAPS transfected lysate(20.79 KDa).

Lane 2: Non-transfected lysate.

[Protocol Download](#)

- Immunohistochemistry (Formalin/PFA-fixed paraffin-embedded sections)

Immunoperoxidase of purified MaxPab antibody to CAPS on formalin-fixed paraffin-embedded human kidney. [antibody concentration 3 ug/ml]

[Protocol Download](#)

Gene Info — CAPS

Entrez GeneID

[828](#)

GeneBank Accession#

[NM_004058](#)

Protein Accession#	NP_004049.1
Gene Name	CAPS
Gene Alias	CAPS1, MGC126562
Gene Description	calcyphosine
Omim ID	114212
Gene Ontology	Hyperlink
Gene Summary	This gene encodes a calcium-binding protein, which may play a role in the regulation of ion transport. A similar protein was first described as a potentially important regulatory protein in the dog thyroid and was termed as R2D5 antigen in rabbit. Alternative splicing of this gene generates two transcript variants. [provided by RefSeq]
Other Designations	calcyphosine 1 thyroid protein p24

Publication Reference

- [Calcium signalling-related proteins are associated with broncho-pulmonary dysplasia progression.](#)

Magagnotti C, Matassa PG, Bachi A, Vendettuoli V, Fermo I, Colnaghi MR, Carletti RM, Mercadante D, Fattore E, Mosca F, Andolfo A.

Journal of Proteomics 2013 Dec; 94:401.

Application: WB, Human, Broncho-alveolar lavage fluid

Disease

- [Anorexia Nervosa](#)
- [Bulimia](#)
- [Genetic Predisposition to Disease](#)