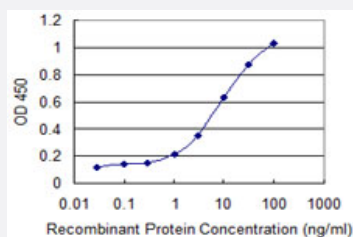


CAPN3 monoclonal antibody (M01), clone 1B2

Catalog # H00000825-M01

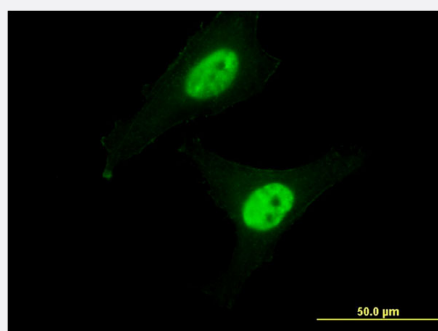
Size 100 ug

Applications



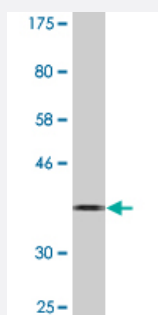
Sandwich ELISA (Recombinant protein)

Detection limit for recombinant GST tagged CAPN3 is 0.3 ng/ml as a capture antibody.



Immunofluorescence

Immunofluorescence of monoclonal antibody to CAPN3 on HeLa cell . [antibody concentration 10 ug/ml]



Western Blot detection against Immunogen (36.74 KDa) .

Specification

Product Description

Mouse monoclonal antibody raised against a partial recombinant CAPN3.

Immunogen	CAPN3 (AAH03169.1, 210 a.a. ~ 309 a.a) partial recombinant protein with GST tag. MW of the GST tag alone is 26 KDa.
Sequence	NKIKAWQKIFKHYD TDQSGTINSYEMRNAVNDAGFHLNNQLYDIITMRYADKHMNIDFDSFICCFVRL EGMFRAFHA FDKDGDGIKLVLEWLQLTMYA
Host	Mouse
Reactivity	Human
Interspecies Antigen Sequence	Mouse (97)
Isotype	IgG2a Kappa
Quality Control Testing	Antibody Reactive Against Recombinant Protein. Western Blot detection against Immunogen (36.74 KDa) .
Storage Buffer	In 1x PBS, pH 7.4
Storage Instruction	Store at -20°C or lower. Aliquot to avoid repeated freezing and thawing.

Applications

- Western Blot (Recombinant protein)

[Protocol Download](#)

- Sandwich ELISA (Recombinant protein)

Detection limit for recombinant GST tagged CAPN3 is 0.3 ng/ml as a capture antibody.

[Protocol Download](#)

- ELISA

- Immunofluorescence

Immunofluorescence of monoclonal antibody to CAPN3 on HeLa cell . [antibody concentration 10 ug/ml]

Gene Info — CAPN3

Entrez GeneID [825](#)

GeneBank Accession# [BC003169](#)

Protein Accession#	AAH03169.1
Gene Name	CAPN3
Gene Alias	CANP3, CANPL3, LGMD2, LGMD2A, MGC10767, MGC11121, MGC14344, MGC4403, nCL-1, p94
Gene Description	calpain 3, (p94)
Omim ID	114240 253600
Gene Ontology	Hyperlink
Gene Summary	Calpain, a heterodimer consisting of a large and a small subunit, is a major intracellular protease, although its function has not been well established. This gene encodes a muscle-specific member of the calpain large subunit family that specifically binds to titin. Mutations in this gene are associated with limb-girdle muscular dystrophies type 2A. Alternate promoters and alternative splicing result in multiple transcript variants encoding different isoforms and some variants are ubiquitously expressed. [provided by RefSeq]
Other Designations	OTTHUMP00000161194 OTTHUMP00000161196 calpain 3 calpain p94, large [catalytic] subunit calpain, large polypeptide L3 muscle-specific calcium-activated neutral protease 3 large subunit

Disease

- [Disease Progression](#)
- [Genetic Predisposition to Disease](#)
- [Muscular Dystrophies](#)