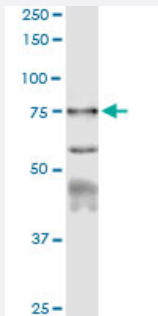


# CAPN1 (Human) IP-WB Antibody Pair

Catalog # H00000823-PW1

Size 1 Set

## Applications



Immunoprecipitation of CAPN1 transfected lysate using rabbit polyclonal anti-CAPN1 and Protein A Magnetic Bead ([U0007](#)), and immunoblotted with mouse purified polyclonal anti-CAPN1.

## Specification

<b>Product Description</b>	This IP-WB antibody pair set comes with one antibody for immunoprecipitation and another to detect the precipitated protein in western blot.
<b>Reactivity</b>	Human
<b>Quality Control Testing</b>	Immunoprecipitation-Western Blot (IP-WB) Immunoprecipitation of CAPN1 transfected lysate using rabbit polyclonal anti-CAPN1 and Protein A Magnetic Bead ( <a href="#">U0007</a> ), and immunoblotted with mouse purified polyclonal anti-CAPN1.
<b>Supplied Product</b>	Antibody pair set content: 1. Antibody pair for IP: rabbit polyclonal anti-CAPN1 (300 ul) 2. Antibody pair for WB: mouse purified polyclonal anti-CAPN1 (50 ug)
<b>Storage Instruction</b>	Store reagents of the antibody pair set at -20°C or lower. Please aliquot to avoid repeated freeze thaw cycle. Reagents should be returned to -20°C storage immediately after use.

## Applications

- Immunoprecipitation-Western Blot

[Protocol Download](#)

## Gene Info — CAPN1

Entrez GeneID	<a href="#">823</a>
Gene Name	CAPN1
Gene Alias	CANP, CANP1, CANPL1, muCANP, muCL
Gene Description	calpain 1, (mu/l) large subunit
Omim ID	<a href="#">114220</a>
Gene Ontology	<a href="#">Hyperlink</a>
Gene Summary	<p>The calpains, calcium-activated neutral proteases, are nonlysosomal, intracellular cysteine proteases. The mammalian calpains include ubiquitous, stomach-specific, and muscle-specific proteins. The ubiquitous enzymes consist of heterodimers with distinct large, catalytic subunits associated with a common small, regulatory subunit. This gene encodes the large subunit of the ubiquitous enzyme, calpain 1. [provided by RefSeq]</p>
Other Designations	calcium-activated neutral proteinase calpain 1, large subunit calpain, large polypeptide L1 cell proliferation-inducing protein 30

## Pathway

- [Apoptosis](#)