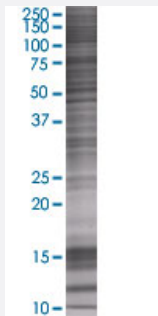


CAMP 293T Cell Transient Overexpression Lysate(Denatured)

Catalog # H00000820-T02

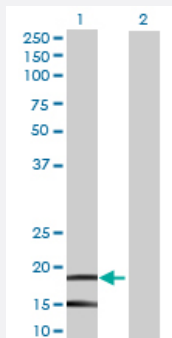
Size 100 uL

Applications



SDS-PAGE Gel

CAMP transfected lysate.



Western Blot

Lane 1: CAMP transfected lysate (18.81 KDa)

Lane 2: Non-transfected lysate.

Specification

Transfected Cell Line	293T
Plasmid	pCMV-CAMP full-length
Host	Human
Theoretical MW (kDa)	18.81
Interspecies Antigen Sequence	Mouse (54); Rat (56)

Quality Control Testing

Transient overexpression cell lysate was tested with Anti-CAMP antibody ([H00000820-B02](#)) by Western Blots.
SDS-PAGE Gel
CAMP transfected lysate.
Western Blot
Lane 1: CAMP transfected lysate (18.81 KDa)
Lane 2: Non-transfected lysate.

Storage Buffer

1X Sample Buffer (50 mM Tris-HCl, 2% SDS, 10% glycerol, 300 mM 2-mercaptoethanol, 0.01% Bromophenol blue)

Storage Instruction

Store at -80°C. Aliquot to avoid repeated freezing and thawing.

Applications

- Western Blot

Gene Info — CAMP

Entrez GeneID[820](#)**GeneBank Accession#**[NM_004345.3](#)**Protein Accession#**[NP_004336.2](#)**Gene Name**

CAMP

Gene Alias

CAP18, CRAMP, FALL-39, FALL39, HSD26, LL37

Gene Description

cathelicidin antimicrobial peptide

Omim ID[600474](#)**Gene Ontology**[Hyperlink](#)**Gene Summary**

Cathelicidin antimicrobial protein is an antimicrobial protein found in specific granules of polymorphonuclear leukocytes (PMNs).[supplied by OMIM]

Other Designations

-