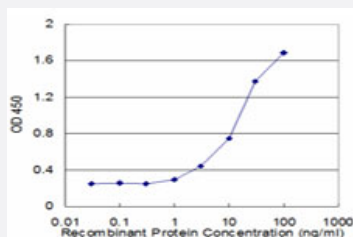


CAMLG monoclonal antibody (M02), clone 3F12

Catalog # H00000819-M02

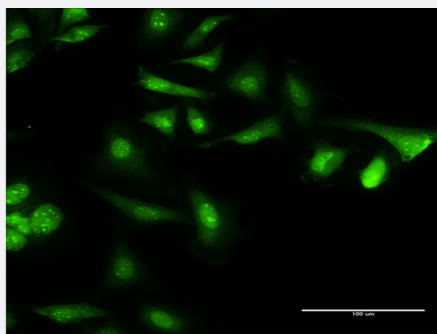
Size 100 ug

Applications



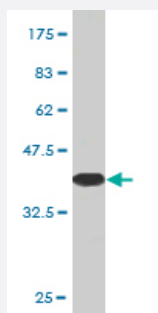
Sandwich ELISA (Recombinant protein)

Detection limit for recombinant GST tagged CAMLG is approximately 1ng/ml as a capture antibody.



Immunofluorescence

Immunofluorescence of monoclonal antibody to CAMLG on HeLa cell .
[antibody concentration 10 ug/ml]



Western Blot detection against Immunogen (36.74 KDa) .

Specification

Product Description

Mouse monoclonal antibody raised against a partial recombinant CAMLG.

Immunogen	CAMLG (NP_001736, 1 a.a. ~ 100 a.a) partial recombinant protein with GST tag. MW of the GST tag alone is 26 KDa.
Sequence	MESMAVATDGGERPAGSGLSASQRRRAELRRRKLLMNSEQRINRMGFHRPGSGAEEESQT KSKQQDSDKLNSLSVPSVSKRVVLGDSVSTGTTDQQG
Host	Mouse
Reactivity	Human
Isotype	IgG2b Kappa
Quality Control Testing	Antibody Reactive Against Recombinant Protein. Western Blot detection against Immunogen (36.74 KDa) .
Storage Buffer	In 1x PBS, pH 7.4
Storage Instruction	Store at -20°C or lower. Aliquot to avoid repeated freezing and thawing.

Applications

- Western Blot (Recombinant protein)

[Protocol Download](#)

- Sandwich ELISA (Recombinant protein)

Detection limit for recombinant GST tagged CAMLG is approximately 1ng/ml as a capture antibody.

[Protocol Download](#)

- ELISA

- Immunofluorescence

Immunofluorescence of monoclonal antibody to CAMLG on HeLa cell . [antibody concentration 10 ug/ml]

Gene Info — CAMLG

Entrez GeneID	819
GeneBank Accession#	NM_001745
Protein Accession#	NP_001736
Gene Name	CAMLG

Gene Alias	CAML, MGC163197
Gene Description	calcium modulating ligand
Omim ID	601118
Gene Ontology	Hyperlink
Gene Summary	<p>The immunosuppressant drug cyclosporin A blocks a calcium-dependent signal from the T-cell receptor (TCR) that normally leads to T-cell activation. When bound to cyclophilin B, cyclosporin A binds and inactivates the key signaling intermediate calcineurin. The protein encoded by this gene functions similarly to cyclosporin A, binding to cyclophilin B and acting downstream of the TCR and upstream of calcineurin by causing an influx of calcium. This integral membrane protein appears to be a new participant in the calcium signal transduction pathway, implicating cyclophilin B in calcium signaling, even in the absence of cyclosporin. [provided by RefSeq]</p>
Other Designations	calcium-modulating cyclophilin ligand calcium-signal modulating cyclophilin ligand cyclophilin B-binding protein

Disease

- [Coronary Artery Disease](#)
- [Genetic Predisposition to Disease](#)