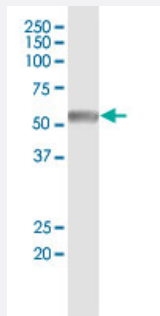


CAMK2B (Human) IP-WB Antibody Pair

Catalog # H00000816-PW2

Size 1 Set

Applications



Immunoprecipitation of CAMK2B transfected lysate using rabbit polyclonal anti-CAMK2B and Protein A Magnetic Bead ([U0007](#)), and immunoblotted with mouse purified polyclonal anti-CAMK2B.

Specification

Product Description	This IP-WB antibody pair set comes with one antibody for immunoprecipitation and another to detect the precipitated protein in western blot.
Reactivity	Human
Quality Control Testing	Immunoprecipitation-Western Blot (IP-WB) Immunoprecipitation of CAMK2B transfected lysate using rabbit polyclonal anti-CAMK2B and Protein A Magnetic Bead (U0007), and immunoblotted with mouse purified polyclonal anti-CAMK2B.
Supplied Product	Antibody pair set content: 1. Antibody pair for IP: rabbit polyclonal anti-CAMK2B (300 ul) 2. Antibody pair for WB: mouse purified polyclonal anti-CAMK2B (50 ug)
Storage Instruction	Store reagents of the antibody pair set at -20°C or lower. Please aliquot to avoid repeated freeze thaw cycle. Reagents should be returned to -20°C storage immediately after use.

Applications

- Immunoprecipitation-Western Blot

[Protocol Download](#)

Gene Info — CAMK2B

Entrez GeneID [816](#)

Gene Name CAMK2B

Gene Alias CAM2, CAMK2, CAMKB, MGC29528

Gene Description calcium/calmodulin-dependent protein kinase II beta

Omim ID [607707](#)

Gene Ontology [Hyperlink](#)

Gene Summary

The product of this gene belongs to the serine/threonine protein kinase family and to the Ca(2+)/calmodulin-dependent protein kinase subfamily. Calcium signaling is crucial for several aspects of plasticity at glutamatergic synapses. In mammalian cells, the enzyme is composed of four different chains: alpha, beta, gamma, and delta. The product of this gene is a beta chain. It is possible that distinct isoforms of this chain have different cellular localizations and interact differently with calmodulin. Eight transcript variants encoding eight distinct isoforms have been identified for this gene . [provided by RefSeq]

Other Designations

CaM kinase II beta subunit|CaM-kinase II beta chain|CaMK-II beta subunit|OTTHUMP00000159355|OTTHUMP00000159356|calcium/calmodulin-dependent protein kinase (CaM kinase) II beta|calcium/calmodulin-dependent protein kinase type II beta chain|proline rich cal

Pathway

- [Calcium signaling pathway](#)
- [ErbB signaling pathway](#)
- [Glioma](#)
- [GnRH signaling pathway](#)
- [Long-term potentiation](#)
- [Melanogenesis](#)
- [Neurotrophin signaling pathway](#)
- [Olfactory transduction](#)
- [Wnt signaling pathway](#)

Disease

- [Attention Deficit Disorder with Hyperactivity](#)
- [Autistic Disorder](#)
- [Cognition](#)
- [NARP](#)
- [Schizophrenia](#)
- [Schizophrenic Psychology](#)
- [Tobacco Use Disorder](#)
- [Weight Gain](#)