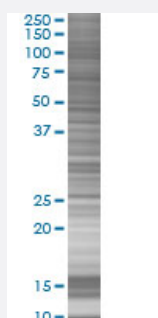


CALB1 293T Cell Transient Overexpression Lysate(Denatured)

Catalog # H00000793-T03

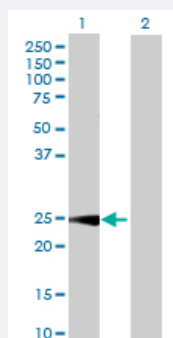
Size 100 uL

Applications



SDS-PAGE Gel

CALB1 transfected lysate.



Western Blot

Lane 1: CALB1 transfected lysate (30.00 KDa)

Lane 2: Non-transfected lysate.

Specification

Transfected Cell Line	293T
Plasmid	pCMV-CALB1 full-length
Host	Human
Theoretical MW (kDa)	30
Interspecies Antigen Sequence	Mouse (98); Rat (98)

Quality Control Testing

Transient overexpression cell lysate was tested with Anti-CALB1 antibody ([H00000793-D01P](#)) by Western Blots.
SDS-PAGE Gel
CALB1 transfected lysate.
Western Blot
Lane 1: CALB1 transfected lysate (30.00 KDa)
Lane 2: Non-transfected lysate.

Storage Buffer

1X Sample Buffer (50 mM Tris-HCl, 2% SDS, 10% glycerol, 300 mM 2-mercaptoethanol, 0.01% Bromophenol blue)

Storage Instruction

Store at -80°C. Aliquot to avoid repeated freezing and thawing.

Applications

- Western Blot

Gene Info — CALB1

Entrez GeneID[793](#)**GeneBank Accession#**[NM_004929](#)**Protein Accession#**[NP_004920.1](#)**Gene Name**

CALB1

Gene Alias

CALB

Gene Description

calbindin 1, 28kDa

Omim ID[114050](#)**Gene Ontology**[Hyperlink](#)**Gene Summary**

Calbindin is a calcium-binding protein belonging to the troponin C superfamily. It was originally described as a 27-kD protein induced by vitamin D in the duodenum of the chick. In the brain, its synthesis is independent of vitamin-D-derived hormones. Calbindin contains 4 active calcium-binding domains, and 2 modified domains that presumably have lost their calcium-binding capacity. The neurons in brains of patients with Huntington disease are calbindin-depleted. [provided by RefSeq]

Other Designations

RTVL-H protein|calbindin 1|calbindin 1, (28kD)

Disease

- [Genetic Predisposition to Disease](#)
- [Parkinson disease](#)