

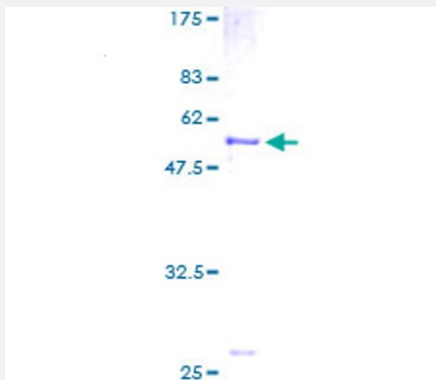
Full-Length

SLC25A20 (Human) Recombinant Protein (P01)

Catalog # H00000788-P01

Size 25 ug, 10 ug

Applications



Specification

Product Description	Human SLC25A20 full-length ORF (AAH01689, 1 a.a. - 301 a.a.) recombinant protein with GST-tag at N-terminal.
Sequence	MADQPKPISPLKNLLAGGFGGVCLVFAGHPLDTVKVRQLTQPPSLPGQPPMYSGTFDCFRKTLF REGITGLYRGMAAPIIGVTPMFAVCFFGFLGKKLQKHPEDVLSYPQLFAAGMLSGVFTTGIMTP GERIKCLLIQASSGESKYTGTLDCAKKLYQEFGIRGNYKGTVLTLMRDVPASGMYFMTYEWLKNIF TPEGKRVSELSAPRILVAGGIAGIFNWAVAIPPDVLKSRFQTAPP GKYPNGFRDVLRELIRDEGVTS LYKGFNAV MIRAFPANAACFLGFEVAMKFLNWATPNL
Host	Wheat Germ (in vitro)
Theoretical MW (kDa)	58.85
Interspecies Antigen Sequence	Mouse (93); Rat (91)
Preparation Method	in vitro wheat germ expression system
Purification	Glutathione Sepharose 4 Fast Flow
Quality Control Testing	12.5% SDS-PAGE Stained with Coomassie Blue.
Storage Buffer	50 mM Tris-HCl, 10 mM reduced Glutathione, pH=8.0 in the elution buffer.

Storage Instruction

Store at -80°C. Aliquot to avoid repeated freezing and thawing.

Note

Best use within three months from the date of receipt of this protein.

Applications

- Enzyme-linked Immunoabsorbent Assay
- Western Blot (Recombinant protein)
- Antibody Production
- Protein Array

Gene Info — SLC25A20

Entrez GeneID[788](#)**GeneBank Accession#**[BC001689](#)**Protein Accession#**[AAH01689](#)**Gene Name**

SLC25A20

Gene Alias

CAC, CACT

Gene Description

solute carrier family 25 (carnitine/acylcarnitine translocase), member 20

Omim ID[212138](#)**Gene Ontology**[Hyperlink](#)**Gene Summary**

This gene product is one of several closely related mitochondrial-membrane carrier proteins that shuttle substrates between cytosol and the intramitochondrial matrix space. This protein mediates the transport of acylcarnitines into mitochondrial matrix for their oxidation by the mitochondrial fatty acid-oxidation pathway. Mutations in this gene are associated with carnitine-acylcarnitine translocase deficiency, which can cause a variety of pathological conditions such as hypoglycemia, cardiac arrest, hepatomegaly, hepatic dysfunction and muscle weakness, and is usually lethal in newborn and infants. [provided by RefSeq]

Other Designations

carnitine/acylcarnitine carrier protein|carnitine/acylcarnitine translocase