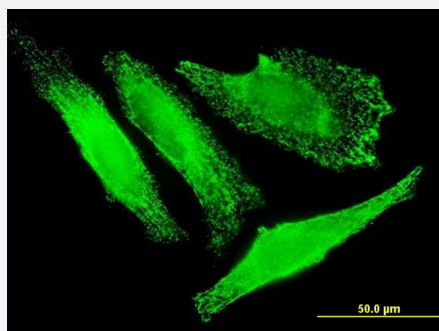


SLC25A20 monoclonal antibody (M02), clone M2

Catalog # H00000788-M02

Size 100 ug

Applications



Immunofluorescence

Immunofluorescence of monoclonal antibody to SLC25A20 on HeLa cell .
[antibody concentration 10 ug/ml]

Specification

Product Description	Mouse monoclonal antibody raised against a full-length recombinant SLC25A20.
Immunogen	SLC25A20 (AAH01689, 1 a.a. ~ 301 a.a) full-length recombinant protein with GST tag. MW of the GST tag alone is 26 KDa.
Sequence	MADQPKPISPLKNLLAGGFGGVCLVFAGHPLDTVKVRLQTQPPSLPGQPPMYSGTDFDCFRKTLF REGITGLYRGMAAPIIGVTPMFAVCFFGFLGKKLQKHPEDVLSYPQLFAAGMLSGVFTTGIMTP GERIKCLLQIQASSGESKYTGTLDCAKKLYQEFGRGMYKGTVLTLMRDVPASGMYFMTYEWLKNIF TPEGKRVSELSAPRILVAGGIAGIFNWAVAIPPDVLKSRFQTAPPGKYPNGFRDVLRELIRDEGVTS LYKGFNAVMI RAFPANAACFLGFEVAMKFLNWATPNL
Host	Mouse
Reactivity	Human
Interspecies Antigen Sequence	Mouse (93); Rat (91)
Isotype	IgG1 kappa
Quality Control Testing	Antibody Reactive Against Recombinant Protein.
Storage Buffer	In 1x PBS, pH 7.4

Storage Instruction

Store at -20°C or lower. Aliquot to avoid repeated freezing and thawing.

Applications

- ELISA
- Immunofluorescence

Immunofluorescence of monoclonal antibody to SLC25A20 on HeLa cell . [antibody concentration 10 ug/ml]

Gene Info — SLC25A20

Entrez GeneID [788](#)

GeneBank Accession# [BC001689](#)

Protein Accession# [AAH01689](#)

Gene Name SLC25A20

Gene Alias CAC, CACT

Gene Description solute carrier family 25 (carnitine/acylcarnitine translocase), member 20

Omim ID [212138](#)

Gene Ontology [Hyperlink](#)

Gene Summary This gene product is one of several closely related mitochondrial-membrane carrier proteins that shuttle substrates between cytosol and the intramitochondrial matrix space. This protein mediates the transport of acylcarnitines into mitochondrial matrix for their oxidation by the mitochondrial fatty acid-oxidation pathway. Mutations in this gene are associated with carnitine-acylcarnitine translocase deficiency, which can cause a variety of pathological conditions such as hypoglycemia, cardiac arrest, hepatomegaly, hepatic dysfunction and muscle weakness, and is usually lethal in newborn and infants. [provided by RefSeq]

Other Designations carnitine/acylcarnitine carrier protein|carnitine/acylcarnitine translocase