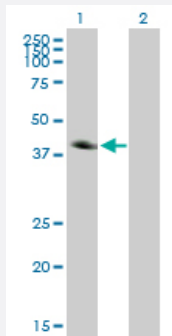


CA12 monoclonal antibody (M01), clone 1D4

Catalog # H00000771-M01

Size 100 ug

Applications

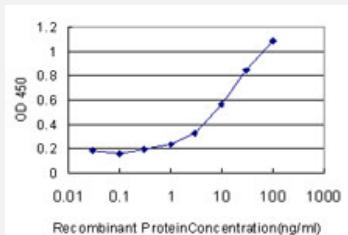


Western Blot (Transfected lysate)

Western Blot analysis of CA12 expression in transfected 293T cell line by CA12 monoclonal antibody (M01), clone 1D4.

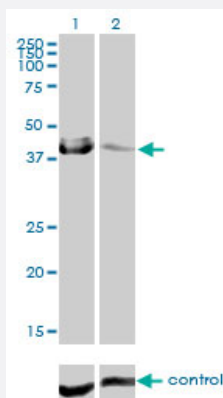
Lane 1: CA12 transfected lysate (39.5 kDa).

Lane 2: Non-transfected lysate.



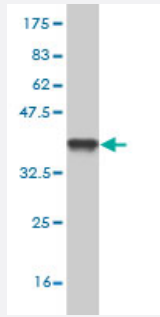
Sandwich ELISA (Recombinant protein)

Detection limit for recombinant GST tagged CA12 is approximately 1 ng/ml as a capture antibody.



RNAi Knockdown (Antibody validated)

Western blot analysis of CA12 over-expressed 293 cell line, cotransfected with CA12 Validated Chimera RNAi (Cat # H00000771-R01V) (Lane 2) or non-transfected control (Lane 1). Blot probed with CA12 monoclonal antibody (M01), clone 1D4 (Cat # H00000771-M01). GAPDH (36.1 kDa) used as specificity and loading control.



Western Blot detection against Immunogen (36.74 KDa) .

Specification

Product Description	Mouse monoclonal antibody raised against a partial recombinant CA12.
Immunogen	CA12 (NP_996808, 25 a.a. ~ 124 a.a) partial recombinant protein with GST tag. MW of the GST tag alone is 26 KDa.
Sequence	APVNGSKWTFYFGPDGENSWSKYPSCGGLLQSPIDLHSDILQYDASLTPLFQGYNLSANKQFLL TNNGHSVKLNLPSDMHIQGLQSRYSATQLHLHWGN
Host	Mouse
Reactivity	Human
Interspecies Antigen Sequence	Mouse (78); Rat (78)
Isotype	IgG2a Kappa
Quality Control Testing	Antibody Reactive Against Recombinant Protein. Western Blot detection against Immunogen (36.74 KDa) .
Storage Buffer	In 1x PBS, pH 7.4
Storage Instruction	Store at -20°C or lower. Aliquot to avoid repeated freezing and thawing.

Applications

● Western Blot (Transfected lysate)

Western Blot analysis of CA12 expression in transfected 293T cell line by CA12 monoclonal antibody (M01), clone 1D4.

Lane 1: CA12 transfected lysate(39.5 KDa).

Lane 2: Non-transfected lysate.

[Protocol Download](#)

- Western Blot (Recombinant protein)

[Protocol Download](#)

- Sandwich ELISA (Recombinant protein)

Detection limit for recombinant GST tagged CA12 is approximately 1ng/ml as a capture antibody.

[Protocol Download](#)

- ELISA

- RNAi Knockdown (Antibody validated)

Western blot analysis of CA12 over-expressed 293 cell line, cotransfected with CA12 Validated Chimera RNAi (Cat # H00000771-R01V) (Lane 2) or non-transfected control (Lane 1). Blot probed with CA12 monoclonal antibody (M01), clone 1D4 (Cat # H00000771-M01). GAPDH (36.1 kDa) used as specificity and loading control.

[Protocol Download](#)

Gene Info — CA12

Entrez GeneID [771](#)

GeneBank Accession# [NM_206925](#)

Protein Accession# [NP_996808](#)

Gene Name CA12

Gene Alias CAXII, FLJ20151, HsT18816

Gene Description carbonic anhydrase XII

Omim ID [603263](#)

Gene Ontology [Hyperlink](#)

Gene Summary Carbonic anhydrases (CAs) are a large family of zinc metalloenzymes that catalyze the reversible hydration of carbon dioxide. They participate in a variety of biological processes, including respiration, calcification, acid-base balance, bone resorption, and the formation of aqueous humor, cerebrospinal fluid, saliva, and gastric acid. This gene product is a type I membrane protein that is highly expressed in normal tissues, such as kidney, colon and pancreas, and has been found to be overexpressed in 10% of clear cell renal carcinomas. Two transcript variants encoding different isoforms have been identified for this gene. [provided by RefSeq]

Other Designations carbonic dehydratase

Pathway

- [Nitrogen metabolism](#)