

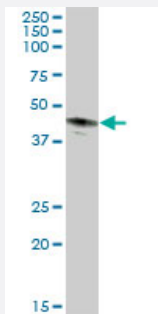
MaxPab®

CA12 MaxPab mouse polyclonal antibody (B01P)

Catalog # H00000771-B01P

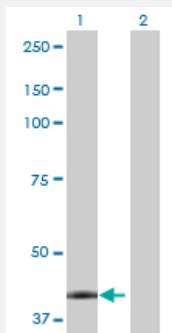
Size 50 ug

Applications



Western Blot (Tissue lysate)

CA12 MaxPab polyclonal antibody. Western Blot analysis of CA12 expression in human kidney.



Western Blot (Transfected lysate)

Western Blot analysis of CA12 expression in transfected 293T cell line ([H00000771-T01](#)) by CA12 MaxPab polyclonal antibody.

Lane 1: CA12 transfected lysate(38.94 KDa).

Lane 2: Non-transfected lysate.

Specification

Product Description

Mouse polyclonal antibody raised against a full-length human CA12 protein.

Immunogen

CA12 (NP_001209.1, 1 a.a. ~ 354 a.a) full-length human protein.

Sequence

MPRRSLHAAVLLLLVILKEQPSSPAPVNGSKWTYFGPDGENSWSKKYPSCGGLLQSPIDLHSDIL
QYDASLTPLFQGYNLSANKQFLLTNNGHSVKLNLPSDMHIQGLQSRYSATQLHLHWGNPNDPH
GSEHTVSGQHFAAELHIVHYNSDLYPDASTASNKSEGLAVLAVLIEMGSFNPSYDKIFSHLQHVKY
KGQEAFFVPGFNIEELLPERTAEYYRYRGSLLTPPCNPTVLWTVFRNPVQISQEQLLALETALYCTH
MDDPSPREMINNFRQVQKFDERLVYTSFSQVQVCTAAGLSLGIILSLALAGILGICMVVVSWLFRFRR
KSIKKGDNKGVIYKPATKMETEAHA

Host

Mouse

Reactivity	Human
Interspecies Antigen Sequence	Mouse (82); Rat (81)
Quality Control Testing	Antibody reactive against mammalian transfected lysate.
Storage Buffer	In 1x PBS, pH 7.4
Storage Instruction	Store at -20°C or lower. Aliquot to avoid repeated freezing and thawing.

Applications

- Western Blot (Tissue lysate)

CA12 MaxPab polyclonal antibody. Western Blot analysis of CA12 expression in human kidney.

[Protocol Download](#)

- Western Blot (Transfected lysate)

Western Blot analysis of CA12 expression in transfected 293T cell line ([H00000771-T01](#)) by CA12 MaxPab polyclonal antibody.

Lane 1: CA12 transfected lysate(38.94 KDa).

Lane 2: Non-transfected lysate.

[Protocol Download](#)

Gene Info — CA12

Entrez GeneID	771
GeneBank Accession#	NM_001218.3
Protein Accession#	NP_001209.1
Gene Name	CA12
Gene Alias	CAXII, FLJ20151, HsT18816
Gene Description	carbonic anhydrase XII
Omim ID	603263
Gene Ontology	Hyperlink

Gene Summary

Carbonic anhydrases (CAs) are a large family of zinc metalloenzymes that catalyze the reversible hydration of carbon dioxide. They participate in a variety of biological processes, including respiration, calcification, acid-base balance, bone resorption, and the formation of aqueous humor, cerebrospinal fluid, saliva, and gastric acid. This gene product is a type I membrane protein that is highly expressed in normal tissues, such as kidney, colon and pancreas, and has been found to be overexpressed in 10% of clear cell renal carcinomas. Two transcript variants encoding different isoforms have been identified for this gene. [provided by RefSeq]

Other Designations

carbonic dehydratase

Pathway

- [Nitrogen metabolism](#)