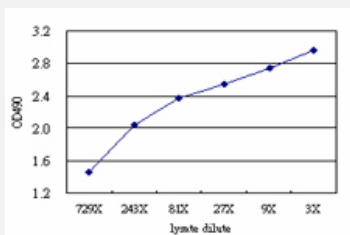


CA12 (Human) Matched Antibody Pair

Catalog # H00000771-AP51

Size 1 Set

Applications



Sandwich ELISA detection sensitivity ranging from approximately 729x to 3x dilution of the CA12 293T overexpression lysate (non-denatured).

Specification

Product Description	This antibody pair set comes with a matched antibody pair to detect and quantify the protein level of human CA12.
Reactivity	Human
Interspecies Antigen Sequence	Mouse (81%); Rat (80%)
Quality Control Testing	Standard curve using CA12 293T overexpression lysate (non-denatured) as an analyte. Sandwich ELISA detection sensitivity ranging from approximately 729x to 3x dilution of the CA12 293T overexpression lysate (non-denatured).
Supplied Product	Antibody pair set content: 1. Capture antibody: mouse monoclonal anti-CA12 (100 ug) 2. Detection antibody: rabbit purified polyclonal anti-CA12 (50 ug) *Reagents are sufficient for at least 3-5 x 96 well plates using recommended protocols.
Storage Instruction	Store reagents of the antibody pair set at -20°C or lower. Please aliquot to avoid repeated freeze thaw cycle. Reagents should be returned to -20°C storage immediately after use.

Applications

- ELISA Pair (Transfected lysate)

[Protocol Download](#)

Gene Info — CA12

Entrez GeneID [771](#)

Gene Name CA12

Gene Alias CAXII, FLJ20151, HsT18816

Gene Description carbonic anhydrase XII

Omim ID [603263](#)

Gene Ontology [Hyperlink](#)

Gene Summary Carbonic anhydrases (CAs) are a large family of zinc metalloenzymes that catalyze the reversible hydration of carbon dioxide. They participate in a variety of biological processes, including respiration, calcification, acid-base balance, bone resorption, and the formation of aqueous humor, cerebrospinal fluid, saliva, and gastric acid. This gene product is a type I membrane protein that is highly expressed in normal tissues, such as kidney, colon and pancreas, and has been found to be overexpressed in 10% of clear cell renal carcinomas. Two transcript variants encoding different isoforms have been identified for this gene. [provided by RefSeq]

Other Designations carbonic dehydratase

Pathway

- [Nitrogen metabolism](#)