

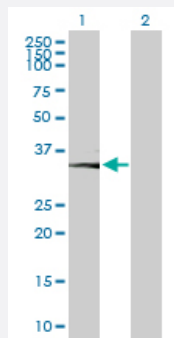
MaxPab®

CA11 purified MaxPab mouse polyclonal antibody (B02P)

Catalog # H00000770-B02P

Size 50 ug

Applications



Western Blot (Transfected lysate)

Western Blot analysis of CA11 expression in transfected 293T cell line ([H00000770-T04](#)) by CA11 MaxPab polyclonal antibody.

Lane 1: CA11 transfected lysate(36.08 KDa).

Lane 2: Non-transfected lysate.

Specification

Product Description	Mouse polyclonal antibody raised against a full-length human CA11 protein.
Immunogen	CA11 (NP_001208.2, 1 a.a. ~ 328 a.a) full-length human protein.
Sequence	MGAAARLSAPRALVLWAALGAAAHIGPAPDPEDWWSYKDNLQGNFVPGPPFWGLVNAAWSLC AVGKRQSPVDVELKRVLYDPFLPPLRLSTGGEKLRGTLNTGRHVSFLPAPRPVVNVSGGPLLYS HRLSELRLLFGARDGAGSEHQINHQGFSAEVQLIHFNQELYGNFSAASRGPNGLAILSLFVNVAST SNPFLSRLLNRDTITRISYKNDAYFLQDLSLELLFPESFGFITYQGSLSLTPPCSETVTWILDRALNITS LQMHSRLRLSQNPSSQIFQSLSGNSRPLQPLAHRALRGNRDPRHPERRRCRGPNYRLHVDGVPHG R
Host	Mouse
Reactivity	Human
Interspecies Antigen Sequence	Mouse (97); Rat (97)
Quality Control Testing	Antibody reactive against mammalian transfected lysate.
Storage Buffer	In 1x PBS, pH 7.4

Storage Instruction

Store at -20°C or lower. Aliquot to avoid repeated freezing and thawing.

Applications

- Western Blot (Transfected lysate)

Western Blot analysis of CA11 expression in transfected 293T cell line ([H00000770-T04](#)) by CA11 MaxPab polyclonal antibody.

Lane 1: CA11 transfected lysate(36.08 KDa).

Lane 2: Non-transfected lysate.

[Protocol Download](#)

Gene Info — CA11

Entrez GeneID [770](#)

GeneBank Accession# [NM_001217.3](#)

Protein Accession# [NP_001208.2](#)

Gene Name CA11

Gene Alias CARP2, CARPX1

Gene Description carbonic anhydrase XI

Omim ID [604644](#)

Gene Ontology [Hyperlink](#)

Gene Summary Carbonic anhydrases (CAs) are a large family of zinc metalloenzymes that catalyze the reversible hydration of carbon dioxide. They participate in a variety of biological processes, including respiration, calcification, acid-base balance, bone resorption, and the formation of aqueous humor, cerebrospinal fluid, saliva, and gastric acid. They show extensive diversity in tissue distribution and in their subcellular localization. CA XI is likely a secreted protein, however, radical changes at active site residues completely conserved in CA isozymes with catalytic activity, make it unlikely that it has carbonic anhydrase activity. It shares properties in common with two other acatalytic CA isoforms, CA VIII and CA X. CA XI is most abundantly expressed in brain, and may play a general role in the central nervous system. [provided by RefSeq]

Other Designations carbonic anhydrase-related protein 2|carbonic anhydrase-related protein XI