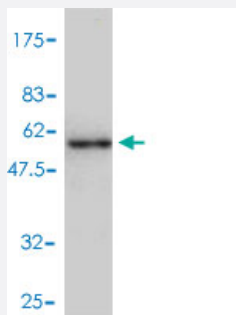


CA1 polyclonal antibody (A01)

Catalog # H00000759-A01

Size 50 uL

Applications



Western Blot detection against Immunogen (54.82 KDa) .

Specification

Product Description	Mouse polyclonal antibody raised against a full-length recombinant CA1.
Immunogen	CA1 (AAH27890, 1 a.a. ~ 261 a.a) full-length recombinant protein with GST tag.
Sequence	MASPDWGYDDKNGPEQWSKLYPIANGNNQSPVDIKTSETKHDTSLKPISVSYNPATAKEIINVGHSHFVNFEDNDNRSVLKGGPFSDSYRLFQFHFHWGSTNEHGSEHTVDGVKYSaelhVAHWNSAKYSSLAEEAASKADGLAVIGVLMKVGEANPKLQKVLDALQAIKTKGKRAPFTNFDpstllPSSLDFTWYPGSLTHPPLYESVTWICKESISVSSEQLAQFRSLLSNVEGDNAVPMQHNNRPTQPLKGRTVRASF
Host	Mouse
Reactivity	Human
Interspecies Antigen Sequence	Mouse (78); Rat (81)
Quality Control Testing	Antibody Reactive Against Recombinant Protein. Western Blot detection against Immunogen (54.82 KDa) .
Storage Buffer	50 % glycerol
Storage Instruction	Store at -20°C or lower. Aliquot to avoid repeated freezing and thawing.

Applications

- Western Blot (Recombinant protein)

[Protocol Download](#)

- ELISA

Gene Info — CA1

Entrez GeneID [759](#)

GeneBank Accession# [BC027890](#)

Protein Accession# [AAH27890](#)

Gene Name CA1

Gene Alias Car1

Gene Description carbonic anhydrase I

Omim ID [114800](#)

Gene Ontology [Hyperlink](#)

Gene Summary Carbonic anhydrases (CAs) are a large family of zinc metalloenzymes that catalyze the reversible hydration of carbon dioxide. They participate in a variety of biological processes, including respiration, calcification, acid-base balance, bone resorption, and the formation of aqueous humor, cerebrospinal fluid, saliva, and gastric acid. They show extensive diversity in tissue distribution and in their subcellular localization. CA1 is closely linked to CA2 and CA3 genes on chromosome 8, and it encodes a cytosolic protein which is found at the highest level in erythrocytes. Variants of this gene have been described in some populations. Multiple alternatively spliced variants, encoding the same protein, have been identified. Transcript variants of CA1 utilizing alternative polyA_sites have been described in literature. [provided by RefSeq]

Other Designations carbonic dehydratase

Publication Reference

- [The human placental proteome is affected by maternal smoking.](#)

Huuskonen P, Amezaga MR, Bellingham M, Jones LH, Storvik M, Hakkinen M, Keski-Nisula L, Heinonen S, O'shaughnessy PJ, Fowler PA, Pasanen M.

Reproductive Toxicology 2016 Aug; 63:22.

Application: WB-Ti, Human, Placental

Pathway

- [Nitrogen metabolism](#)

Disease

- [Diabetic Retinopathy](#)