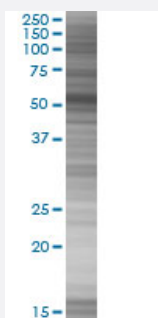


# FMNL1 293T Cell Transient Overexpression Lysate(Denatured)

Catalog # H00000752-T01

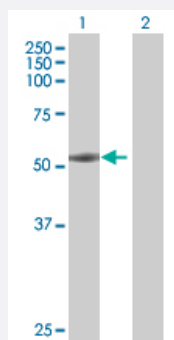
Size 100 uL

## Applications



### SDS-PAGE Gel

FMNL1 transfected lysate.



### Western Blot

Lane 1: FMNL1 transfected lysate ( 52.4 KDa)

Lane 2: Non-transfected lysate.

## Specification

**Transfected Cell Line** 293T

**Plasmid** pCMV-FMNL1 full-length

**Host** Human

**Theoretical MW (kDa)** 52.4

### Quality Control Testing

Transient overexpression cell lysate was tested with Anti-FMNL1 antibody ([H00000752-B01](#)) by Western Blots.

SDS-PAGE Gel

FMNL1 transfected lysate.

Western Blot

Lane 1: FMNL1 transfected lysate ( 52.4 KDa)

Lane 2: Non-transfected lysate.

Storage Buffer	1X Sample Buffer (50 mM Tris-HCl, 2% SDS, 10% glycerol, 300 mM 2-mercaptoethanol, 0.01% Bromophenol blue)
Storage Instruction	Store at -80°C. Aliquot to avoid repeated freezing and thawing.

## Applications

- Western Blot

## Gene Info — FMNL1

Entrez GeneID	<a href="#">752</a>
GeneBank Accession#	<a href="#">BC021906.1</a>
Protein Accession#	-
Gene Name	FMNL1
Gene Alias	C17orf1, C17orf1B, FHOD4, FMNL, KW-13, MGC133052, MGC1894, MGC21878
Gene Description	formin-like 1
Omim ID	<a href="#">604656</a>
Gene Ontology	<a href="#">Hyperlink</a>
Gene Summary	This gene encodes a formin-related protein. Formin-related proteins have been implicated in morphogenesis, cytokinesis, and cell polarity. An alternative splice variant has been described but its full length sequence has not been determined. [provided by RefSeq]
Other Designations	CLL-associated antigen KW-13 leukocyte formin