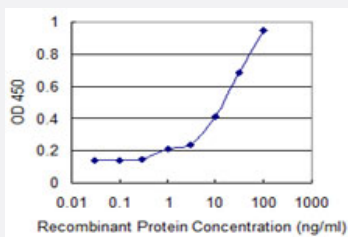


FMNL1 monoclonal antibody (M01), clone 1D7

Catalog # H00000752-M01

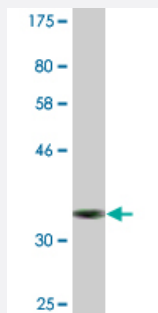
Size 100 ug

Applications



Sandwich ELISA (Recombinant protein)

Detection limit for recombinant GST tagged FMNL1 is 0.3 ng/ml as a capture antibody.



Western Blot detection against Immunogen (36.63 KDa) .

Specification

Product Description	Mouse monoclonal antibody raised against a partial recombinant FMNL1.
Immunogen	FMNL1 (NP_005883, 893 a.a. ~ 991 a.a) partial recombinant protein with GST tag. MW of the GST tag alone is 26 KDa.
Sequence	QLTGFHSDLHFLDKAGSVSLDSVLADVRS LQRGLELTQREFVRQDDCMVLKEFLRANSPTMDKL LADSKTAQEAFESVVEYFGENPKTTSPGLFFSLFS
Host	Mouse
Reactivity	Human
Isotype	IgG2a Kappa

Quality Control Testing

Antibody Reactive Against Recombinant Protein.
Western Blot detection against Immunogen (36.63 KDa) .

Storage Buffer

In 1x PBS, pH 7.4

Storage Instruction

Store at -20°C or lower. Aliquot to avoid repeated freezing and thawing.

Applications

- Western Blot (Recombinant protein)

[Protocol Download](#)

- Sandwich ELISA (Recombinant protein)

Detection limit for recombinant GST tagged FMNL1 is 0.3 ng/ml as a capture antibody.

[Protocol Download](#)

- ELISA

Gene Info — FMNL1

Entrez GeneID

[752](#)

GeneBank Accession#

[NM_005892](#)

Protein Accession#

[NP_005883](#)

Gene Name

FMNL1

Gene Alias

C17orf1, C17orf1B, FHOD4, FMNL, KW-13, MGC133052, MGC1894, MGC21878

Gene Description

formin-like 1

Omim ID

[604656](#)

Gene Ontology

[Hyperlink](#)

Gene Summary

This gene encodes a formin-related protein. Formin-related proteins have been implicated in morphogenesis, cytokinesis, and cell polarity. An alternative splice variant has been described but its full length sequence has not been determined. [provided by RefSeq]

Other Designations

CLL-associated antigen KW-13|leukocyte formin