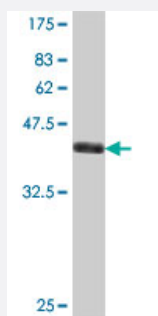


MRPL49 polyclonal antibody (A01)

Catalog # H00000740-A01

Size 50 uL

Applications



Western Blot detection against Immunogen (37.11 KDa) .

Specification

Product Description	Mouse polyclonal antibody raised against a partial recombinant MRPL49.
Immunogen	MRPL49 (NP_004918, 67 a.a. ~ 166 a.a) partial recombinant protein with GST tag.
Sequence	PTPSGWQPPRDPPPNLPYFVRRSRMHNIPVYKDITHGNRQMTVIRKVEGDWALQKDVEDFLSPL LGKTPVTQVNEVTGTLRIKGYFDQELKAWLLEKGF
Host	Mouse
Reactivity	Human
Interspecies Antigen Sequence	Mouse (92); Rat (93)
Quality Control Testing	Antibody Reactive Against Recombinant Protein. Western Blot detection against Immunogen (37.11 KDa) .
Storage Buffer	50 % glycerol
Storage Instruction	Store at -20°C or lower. Aliquot to avoid repeated freezing and thawing.

Applications

- Western Blot (Recombinant protein)

[Protocol Download](#)

- ELISA

Gene Info — MRPL49

Entrez GeneID [740](#)

GeneBank Accession# [NM_004927](#)

Protein Accession# [NP_004918](#)

Gene Name MRPL49

Gene Alias C11orf4, L49mt, MGC10656, NOF, NOF1

Gene Description mitochondrial ribosomal protein L49

Omim ID [606866](#)

Gene Ontology [Hyperlink](#)

Gene Summary

Mammalian mitochondrial ribosomal proteins are encoded by nuclear genes and help in protein synthesis within the mitochondrion. Mitochondrial ribosomes (mitoribosomes) consist of a small 28S subunit and a large 39S subunit. They have an estimated 75% protein to rRNA composition compared to prokaryotic ribosomes, where this ratio is reversed. Another difference between mammalian mitoribosomes and prokaryotic ribosomes is that the latter contain a 5S rRNA. Among different species, the proteins comprising the mitoribosome differ greatly in sequence, and sometimes in biochemical properties, which prevents easy recognition by sequence homology. This gene encodes a 39S subunit protein. This gene and the gene for the HRD1 protein use in their respective 3' UTRs some of the same genomic sequence. Pseudogenes corresponding to this gene are found on chromosomes 5q and 8p. [provided by RefSeq]

Other Designations neighbor of FAU|next to FAU