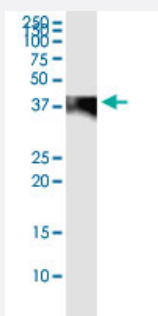


# C4BPB (Human) IP-WB Antibody Pair

Catalog # H00000725-PW3

Size 1 Set

## Applications



Immunoprecipitation of C4BPB transfected lysate using rabbit polyclonal anti-C4BPB and Protein A Magnetic Bead ([U0007](#)), and immunoblotted with mouse purified polyclonal anti-C4BPB.

## Specification

<b>Product Description</b>	This IP-WB antibody pair set comes with one antibody for immunoprecipitation and another to detect the precipitated protein in western blot.
<b>Reactivity</b>	Human
<b>Quality Control Testing</b>	Immunoprecipitation-Western Blot (IP-WB) Immunoprecipitation of C4BPB transfected lysate using rabbit polyclonal anti-C4BPB and Protein A Magnetic Bead ( <a href="#">U0007</a> ), and immunoblotted with mouse purified polyclonal anti-C4BPB.
<b>Supplied Product</b>	Antibody pair set content: 1. Antibody pair for IP: rabbit polyclonal anti-C4BPB (300 ul) 2. Antibody pair for WB: mouse purified polyclonal anti-C4BPB (50 ug)
<b>Storage Instruction</b>	Store reagents of the antibody pair set at -20°C or lower. Please aliquot to avoid repeated freeze thaw cycle. Reagents should be returned to -20°C storage immediately after use.

## Applications

- Immunoprecipitation-Western Blot

[Protocol Download](#)

## Gene Info — C4BPB

Entrez GeneID [725](#)

Gene Name C4BPB

Gene Alias C4BP

Gene Description complement component 4 binding protein, beta

Omim ID [120831](#)

Gene Ontology [Hyperlink](#)

**Gene Summary**

This gene encodes a member of a superfamily of proteins composed predominantly of tandemly arrayed short consensus repeats of approximately 60 amino acids. A single, unique beta-chain encoded by this gene assembles with seven identical alpha-chains into the predominant isoform of C4b-binding protein, a multimeric protein that controls activation of the complement cascade through the classical pathway. C4b-binding protein has a regulatory role in the coagulation system also, mediated through the beta-chain binding of protein S, a vitamin K-dependent protein that serves as a cofactor of activated protein C. The genes encoding both alpha and beta chains are located adjacent to each other on human chromosome 1 in the regulator of complement activation gene cluster. Alternative splicing gives rise to multiple transcript variants. [provided by RefSeq]

**Other Designations**

C4b binding protein, beta chain|OTTHUMP00000034288|OTTHUMP00000034289|OTTHUMP0000034375|complement component 4 binding protein, beta chain|complement component 4-binding protein, beta

## Pathway

- [Complement and coagulation cascades](#)

## Disease

- [Birth Weight](#)
- [Genetic Predisposition to Disease](#)
- [Glioblastoma](#)
- [Glioma](#)
- [Leukemia](#)
- [Lymphoma](#)

- [Macular Degeneration](#)
- [Meningeal Neoplasms](#)
- [Meningioma](#)
- [Tobacco Use Disorder](#)
- [Venous Thrombosis](#)