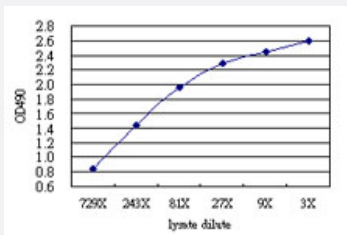


C4BPB (Human) Matched Antibody Pair

Catalog # H00000725-AP51

Size 1 Set

Applications



Sandwich ELISA detection sensitivity ranging from approximately 729x to 3x dilution of the C4BPB 293T overexpression lysate (non-denatured).

Specification

Product Description	This antibody pair set comes with a matched antibody pair to detect and quantify the protein level of human C4BPB.
Reactivity	Human
Quality Control Testing	Standard curve using C4BPB 293T overexpression lysate (non-denatured) as an analyte. Sandwich ELISA detection sensitivity ranging from approximately 729x to 3x dilution of the C4BPB 293T overexpression lysate (non-denatured).
Supplied Product	Antibody pair set content: 1. Capture antibody: mouse monoclonal anti-C4BPB (100 ug) 2. Detection antibody: rabbit purified polyclonal anti-C4BPB (50 ug) *Reagents are sufficient for at least 3-5 x 96 well plates using recommended protocols.
Storage Instruction	Store reagents of the antibody pair set at -20°C or lower. Please aliquot to avoid repeated freeze thaw cycle. Reagents should be returned to -20°C storage immediately after use.

Applications

- ELISA Pair (Transfected lysate)

[Protocol Download](#)

Gene Info — C4BPB

Entrez GeneID	725
Gene Name	C4BPB
Gene Alias	C4BP
Gene Description	complement component 4 binding protein, beta
Omim ID	120831
Gene Ontology	Hyperlink
Gene Summary	<p>This gene encodes a member of a superfamily of proteins composed predominantly of tandemly arrayed short consensus repeats of approximately 60 amino acids. A single, unique beta-chain encoded by this gene assembles with seven identical alpha-chains into the predominant isoform of C4b-binding protein, a multimeric protein that controls activation of the complement cascade through the classical pathway. C4b-binding protein has a regulatory role in the coagulation system also, mediated through the beta-chain binding of protein S, a vitamin K-dependent protein that serves as a cofactor of activated protein C. The genes encoding both alpha and beta chains are located adjacent to each other on human chromosome 1 in the regulator of complement activation gene cluster. Alternative splicing gives rise to multiple transcript variants. [provided by RefSeq]</p>
Other Designations	C4b binding protein, beta chain OTTHUMP00000034288 OTTHUMP00000034289 OTTHUMP0000034375 complement component 4 binding protein, beta chain complement component 4-binding protein, beta

Pathway

- [Complement and coagulation cascades](#)

Disease

- [Birth Weight](#)
- [Genetic Predisposition to Disease](#)
- [Glioblastoma](#)
- [Glioma](#)
- [Leukemia](#)
- [Lymphoma](#)

- [Macular Degeneration](#)
- [Meningeal Neoplasms](#)
- [Meningioma](#)
- [Tobacco Use Disorder](#)
- [Venous Thrombosis](#)