

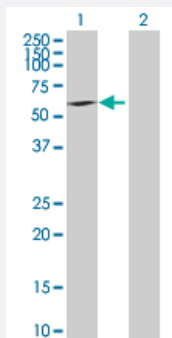
MaxPab®

BYSL purified MaxPab mouse polyclonal antibody (B02P)

Catalog # H00000705-B02P

Size 50 ug

Applications

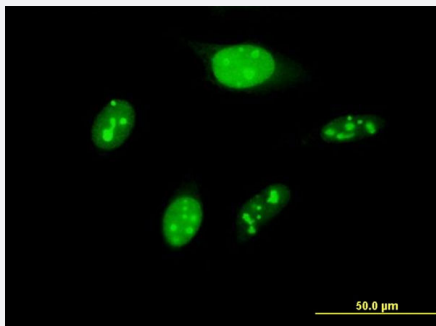


Western Blot (Transfected lysate)

Western Blot analysis of BYSL expression in transfected 293T cell line ([H00000705-T02](#)) by BYSL MaxPab polyclonal antibody.

Lane 1: BYSL transfected lysate(48.07 KDa).

Lane 2: Non-transfected lysate.



Immunofluorescence

Immunofluorescence of purified MaxPab antibody to BYSL on HeLa cell.
[antibody concentration 10 ug/ml]

Specification

Product Description

Mouse polyclonal antibody raised against a full-length human BYSL protein.

Immunogen

BYSL (NP_004044.3, 1 a.a. ~ 437 a.a) full-length human protein.

Sequence

MPKFKAARGVGGQEKHAPLADQILAGNAVRAAGVREKRRGRGTGEAEEEEYVGPRLSRRILQQARQ
QEELEAEHGTGDKPAAPRERTTRLGPRMPQDGSDDDEEWPTLEKAATMTAAGHHAEEVVVD
PEDERAIEFMNKNPPARRTLADIIMEKLTEKQTEVETVMSEVSGFPMPQLDPRVLEVYRGVREV
LSKYRSGKLPKAFKIIIPALSNWEQILYVTEPEAWTAAAMYQATRIFASNLKERMAQRFYNLVLLPRV
RDDVAEYKRLNFHLYMALKKALFKPGAWFKGILPLCESGTCTLREAIIVGSIITKCSIPVLHSSAAML
KIAEMEYSGANSIFLRLLLDKKYALPYRVLDAVFHFLGFRTEKRELPLVWHQCLLTLVQRYKADLA
TDQKEALLELLRLQPHPQLSPEIRRELQSAVPRDVEDVPITVE

Host	Mouse
Reactivity	Human
Interspecies Antigen Sequence	Mouse (91); Rat (91)
Quality Control Testing	Antibody reactive against mammalian transfected lysate.
Storage Buffer	In 1x PBS, pH 7.4
Storage Instruction	Store at -20°C or lower. Aliquot to avoid repeated freezing and thawing.

Applications

- Western Blot (Transfected lysate)

Western Blot analysis of BYSL expression in transfected 293T cell line ([H00000705-T02](#)) by BYSL MaxPab polyclonal antibody.

Lane 1: BYSL transfected lysate(48.07 KDa).

Lane 2: Non-transfected lysate.

[Protocol Download](#)

- Immunofluorescence

Immunofluorescence of purified MaxPab antibody to BYSL on HeLa cell. [antibody concentration 10 ug/ml]

Gene Info — BYSL

Entrez GeneID	705
GeneBank Accession#	NM_004053.3
Protein Accession#	NP_004044.3
Gene Name	BYSL
Gene Alias	BYSTIN
Gene Description	bystin-like
Omim ID	603871
Gene Ontology	Hyperlink

Gene Summary

Bystin is expressed as a 2-kb major transcript and a 3.6-kb minor transcript in SNG-M cells and in human trophoblastic teratocarcinoma HT-H cells. Protein binding assays determined that bystin binds directly to trophinin and tastin, and that binding is enhanced when cytokeratins 8 and 18 are present. Immunocytochemistry of HT-H cells showed that bystin colocalizes with trophinin, tastin, and the cytokeratins, suggesting that these molecules form a complex in trophectoderm cells at the time of implantation. Using immunohistochemistry it was determined that trophinin and bystin are found in the placenta from the sixth week of pregnancy. Both proteins were localized in the cytoplasm of the syncytiotrophoblast in the chorionic villi and in endometrial decidual cells at the uteroplacental interface. After week 10, the levels of trophinin, tastin, and bystin decreased and then disappeared from placental villi. [provided by RefSeq]

Other Designations

OTTHUMP00000039776|by the ribosomal protein s6 gene, drosophila, homolog-like|bystin

Disease

- [Kidney Failure](#)