

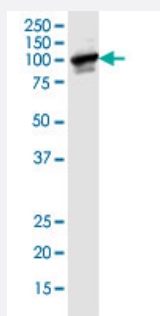
CX Grade

BUB1B monoclonal antibody (M02J), clone 2G5

Catalog # H00000701-M02J

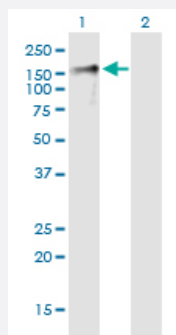
Size 100 ug

Applications



Western Blot (Cell lysate)

BUB1B monoclonal antibody (M02J), clone 2G5. Western Blot analysis of BUB1B expression in HeLa S3 NE.

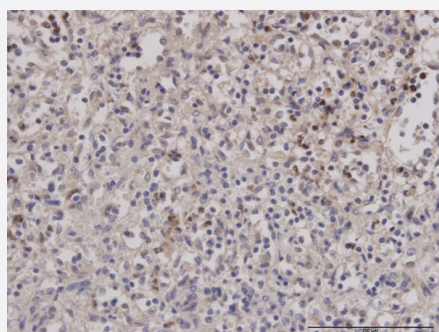


Western Blot (Transfected lysate)

Western Blot analysis of BUB1B expression in transfected 293T cell line by BUB1B monoclonal antibody (M02J), clone 2G5.

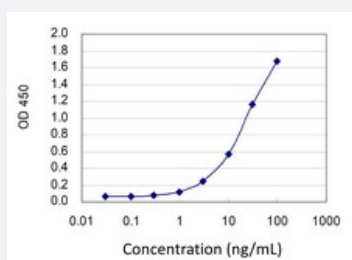
Lane 1: BUB1B transfected lysate (Predicted MW: 119.5 KDa).

Lane 2: Non-transfected lysate.



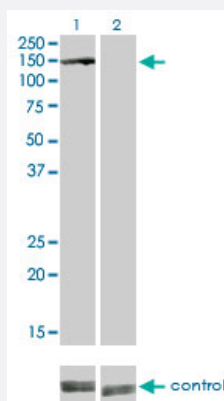
Immunohistochemistry (Formalin/PFA-fixed paraffin-embedded sections)

Immunoperoxidase of monoclonal antibody to BUB1B on formalin-fixed paraffin-embedded human spleen. [antibody concentration 3 ug/ml]



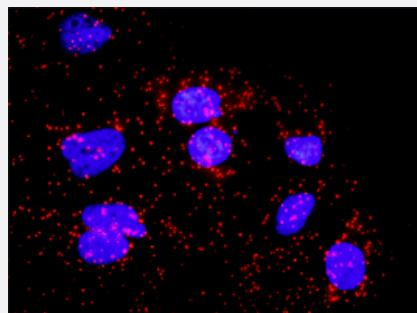
Sandwich ELISA (Recombinant protein)

Detection limit for recombinant GST tagged BUB1B is 0.3 ng/ml as a capture antibody.



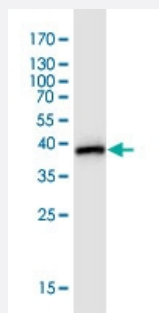
RNAi Knockdown (Antibody validated)

Western blot analysis of BUB1B over-expressed 293 cell line, cotransfected with BUB1B Validated Chimera RNAi (Cat # H00000701-R01V) (Lane 2) or non-transfected control (Lane 1). Blot probed with BUB1B monoclonal antibody (M02) clone 2G5 (Cat # H00000701-M02). GAPDH (36.1 kDa) used as specificity and loading control.



In situ Proximity Ligation Assay (Cell)

Proximity Ligation Analysis of protein-protein interactions between CDC20 and BUB1B. HeLa cells were stained with anti-CDC20 rabbit purified polyclonal 1:1200 and anti-BUB1B mouse monoclonal antibody 1:50. Each red dot represents the detection of protein-protein interaction complex, and nuclei were counterstained with DAPI (blue).



Western Blot detection against Immunogen (39.93 KDa) .

Specification

Product Description

Mouse monoclonal antibody raised against a partial recombinant BUB1B. This product is belong to Cell Culture Grade Antibody (CX Grade).

Immunogen

BUB1B (AAH18739, 1 a.a. ~ 130 a.a) partial recombinant protein with GST tag. MW of the GST tag alone is 26 KDa.

Sequence

MAAVKKEGGALSEAMSLEGDEWELSKENVQPLRQGRIMSTLQGALAQESACNNTLQQQKRAFE
YEIRFYTGNDPLDVWDRIYSWTEQNYPQGGKESNMSTLLERAVEALQGEKRYSDPRFLNLWLKL
GR

Host

Mouse

Reactivity

Human

Interspecies Antigen Sequence	Mouse (82)
Preparation Method	Cell Culture Production
Isotype	IgG1 Kappa
Quality Control Testing	Antibody Reactive Against Recombinant Protein. Western Blot detection against Immunogen (39.93 KDa) .
Storage Buffer	In 1x PBS, pH 7.4
Storage Instruction	Store at -20°C or lower. Aliquot to avoid repeated freezing and thawing.

Applications

- Western Blot (Cell lysate)

BUB1B monoclonal antibody (M02J), clone 2G5. Western Blot analysis of BUB1B expression in Hela S3 NE.

[Protocol Download](#)

- Western Blot (Transfected lysate)

Western Blot analysis of BUB1B expression in transfected 293T cell line by BUB1B monoclonal antibody (M02J), clone 2G5.

Lane 1: BUB1B transfected lysate (Predicted MW: 119.5 KDa).

Lane 2: Non-transfected lysate.

[Protocol Download](#)

- Western Blot (Recombinant protein)

[Protocol Download](#)

- Immunohistochemistry (Formalin/PFA-fixed paraffin-embedded sections)

Immunoperoxidase of monoclonal antibody to BUB1B on formalin-fixed paraffin-embedded human spleen. [antibody concentration 3 ug/ml]

[Protocol Download](#)

- Sandwich ELISA (Recombinant protein)

Detection limit for recombinant GST tagged BUB1B is 0.3 ng/ml as a capture antibody.

[Protocol Download](#)

- ELISA

- RNAi Knockdown (Antibody validated)

Western blot analysis of BUB1B over-expressed 293 cell line, cotransfected with BUB1B Validated Chimera RNAi (Cat # H00000701-R01V) (Lane 2) or non-transfected control (Lane 1). Blot probed with BUB1B monoclonal antibody (M02) clone 2G5 (Cat # H00000701-M02). GAPDH (36.1 kDa) used as specificity and loading control.

[Protocol Download](#)

- *In situ* Proximity Ligation Assay (Cell)

Proximity Ligation Analysis of protein-protein interactions between CDC20 and BUB1B. HeLa cells were stained with anti-CDC20 rabbit purified polyclonal 1:1200 and anti-BUB1B mouse monoclonal antibody 1:50. Each red dot represents the detection of protein-protein interaction complex, and nuclei were counterstained with DAPI (blue).

Gene Info — BUB1B

Entrez GeneID [701](#)

GeneBank Accession# [BC018739](#)

Protein Accession# [AAH18739](#)

Gene Name BUB1B

Gene Alias BUB1beta, BUBR1, Bub1A, MAD3L, SSK1, hBUBR1

Gene Description budding uninhibited by benzimidazoles 1 homolog beta (yeast)

Omim ID [114500 602860](#)

Gene Ontology [Hyperlink](#)

Gene Summary This gene encodes a kinase involved in spindle checkpoint function. The protein has been localized to the kinetochore and plays a role in the inhibition of the anaphase-promoting complex/cyclosome (APC/C), delaying the onset of anaphase and ensuring proper chromosome segregation. Impaired spindle checkpoint function has been found in many forms of cancer. [provided by RefSeq]

Other Designations BUB1 budding uninhibited by benzimidazoles 1 homolog beta|MAD3/BUB1-related protein kinase|budding uninhibited by benzimidazoles 1, beta

Pathway

- [Cell cycle](#)

Disease

- [Adenocarcinoma](#)
- [Breast cancer](#)
- [Breast Neoplasms](#)
- [Carcinoma](#)
- [Esophageal Neoplasms](#)
- [Genetic Predisposition to Disease](#)
- [Kidney Failure](#)
- [Lung Neoplasms](#)
- [Pulmonary Disease](#)