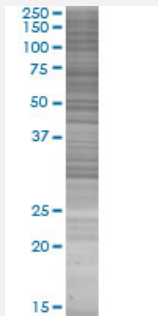


BTN1A1 293T Cell Transient Overexpression Lysate(Denatured)

Catalog # H00000696-T01

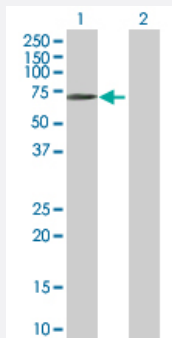
Size 100 uL

Applications



SDS-PAGE Gel

BTN1A1 transfected lysate.



Western Blot

Lane 1: BTN1A1 transfected lysate (59.00 KDa)

Lane 2: Non-transfected lysate.

Specification

Transfected Cell Line	293T
Plasmid	pCMV-BTN1A1 full-length
Host	Human
Theoretical MW (kDa)	59
Interspecies Antigen Sequence	Mouse (74); Rat (74)

Quality Control Testing

Transient overexpression cell lysate was tested with Anti-BTN1A1 antibody ([H00000696-D01P](#)) by Western Blots.
SDS-PAGE Gel
BTN1A1 transfected lysate.
Western Blot
Lane 1: BTN1A1 transfected lysate (59.00 KDa)
Lane 2: Non-transfected lysate.

Storage Buffer

1X Sample Buffer (50 mM Tris-HCl, 2% SDS, 10% glycerol, 300 mM 2-mercaptoethanol, 0.01% Bromophenol blue)

Storage Instruction

Store at -80°C. Aliquot to avoid repeated freezing and thawing.

Applications

- Western Blot

Gene Info — BTN1A1

Entrez GeneID

[696](#)

GeneBank Accession#

[BC096312.3](#)

Protein Accession#

[AAH96312.1](#)

Gene Name

BTN1A1

Gene Alias

BT, BTN

Gene Description

butyrophilin, subfamily 1, member A1

Omim ID

[601610](#)

Gene Ontology

[Hyperlink](#)

Gene Summary

Butyrophilin is the major protein associated with fat droplets in the milk. It is a member of the immunoglobulin superfamily. It may have a cell surface receptor function. The human butyrophilin gene is localized in the major histocompatibility complex (MHC) class I region of 6p and may have arisen relatively recently in evolution by the shuffling of exons between 2 ancestral gene families [provided by RefSeq]

Other Designations

OTTHUMP00000017981|pK14H9.2 (butyrophilin, subfamily 1, member A1)