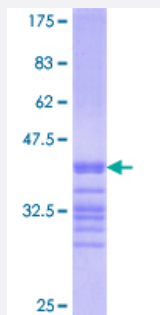


BTN1A1 (Human) Recombinant Protein (Q03)

Catalog # H00000696-Q03

Size 25 ug, 10 ug

Applications



Specification

Product Description	Human BTN1A1 partial ORF (NP_001723.1, 107 a.a. - 206 a.a.) recombinant protein with GST-tag at N-terminal.
Sequence	VALRIRGVRVSDDGEYTCFFREDGSYEEALVHLKVAALGSDPHISMQVQENGECLECTSVGWYP EPQVQWRTSKGEKFPSTSESRNPDEEGLFTVAASV
Host	Wheat Germ (in vitro)
Theoretical MW (kDa)	36.63
Interspecies Antigen Sequence	Mouse (69); Rat (72)
Preparation Method	in vitro wheat germ expression system
Purification	Glutathione Sepharose 4 Fast Flow
Quality Control Testing	12.5% SDS-PAGE Stained with Coomassie Blue.
Storage Buffer	50 mM Tris-HCl, 10 mM reduced Glutathione, pH=8.0 in the elution buffer.
Storage Instruction	Store at -80°C. Aliquot to avoid repeated freezing and thawing.
Note	Best use within three months from the date of receipt of this protein.

Applications

- Enzyme-linked Immunoabsorbent Assay
- Western Blot (Recombinant protein)
- Antibody Production
- Protein Array

Gene Info — BTN1A1

Entrez GeneID	696
GeneBank Accession#	NM_001732
Protein Accession#	NP_001723.1
Gene Name	BTN1A1
Gene Alias	BT, BTN
Gene Description	butyrophilin, subfamily 1, member A1
Omim ID	601610
Gene Ontology	Hyperlink
Gene Summary	Butyrophilin is the major protein associated with fat droplets in the milk. It is a member of the immunoglobulin superfamily. It may have a cell surface receptor function. The human butyrophilin gene is localized in the major histocompatibility complex (MHC) class I region of 6p and may have arisen relatively recently in evolution by the shuffling of exons between 2 ancestral gene families [provided by RefSeq]
Other Designations	OTTHUMP00000017981 bK14H9.2 (butyrophilin, subfamily 1, member A1)