

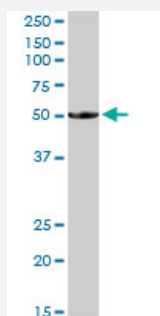
MaxPab®

BTN1A1 purified MaxPab rabbit polyclonal antibody (D01P)

Catalog # H00000696-D01P

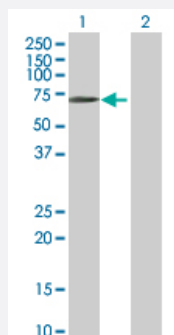
Size 100 ug

Applications



Western Blot (Tissue lysate)

BTN1A1 MaxPab rabbit polyclonal antibody. Western Blot analysis of BTN1A1 expression in human pancreas.



Western Blot (Transfected lysate)

Western Blot analysis of BTN1A1 expression in transfected 293T cell line ([H00000696-T01](#)) by BTN1A1 MaxPab polyclonal antibody.

Lane 1: BTN1A1 transfected lysate(59.00 KDa).

Lane 2: Non-transfected lysate.

Specification

Product Description

Rabbit polyclonal antibody raised against a full-length human BTN1A1 protein.

Immunogen

BTN1A1 (AAH96312.1, 1 a.a. ~ 526 a.a) full-length human protein.

Sequence	MAVFPSSGLPRCLLTILLQLPKLDSAPFDVIGPPEPILAVVGEDAELPCRLSPNASAEHLELRWF RKKVSPAVLVHRDGREQEAEQMPEYRGRATLVQDGIAGRVALRIRGVRVSDDGEYTCFFREDG SYEEALVHLKVAALGSDPHISMQVQENGECLECTSVGWYPEPQVQWRTSKGEKFPSTSES DEEGLFTVAASVIRDTSAKNVSCYIQNLLLGQEKKEISIPASSLPRLTPWIVAVAVILMVLGLLTIGS IFFTWRLYNERPRERRNEFSSKERLLEELKWKKATLHAVDVTLDPDTAHPLFLYEDSKSVRLD SRQKLPEKTERFDSWPCVLGRETFTSGRHYWEVEVGDRTDWAIGVCRENVMMKKGFDPMT PEN GFWAVELYNGYWALTPLRTPLPLAGPPRRVGIFLDYESGDISFYNMNDGSDIYTF SNVTFSGPLR PFFCLWSSGKKPLTICPIADGPERVTVIANAQDLSKEIPLSPMGEDSAPRDADTLH SKLIPTQPSQ GAP
Host	Rabbit
Reactivity	Human
Interspecies Antigen Sequence	Mouse (74); Rat (74)
Quality Control Testing	Antibody reactive against mammalian transfected lysate.
Storage Buffer	In 1x PBS, pH 7.4
Storage Instruction	Store at -20°C or lower. Aliquot to avoid repeated freezing and thawing.

Applications

- Western Blot (Tissue lysate)

BTN1A1 MaxPab rabbit polyclonal antibody. Western Blot analysis of BTN1A1 expression in human pancreas.

[Protocol Download](#)

- Western Blot (Transfected lysate)

Western Blot analysis of BTN1A1 expression in transfected 293T cell line ([H00000696-T01](#)) by BTN1A1 MaxPab polyclonal antibody.

Lane 1: BTN1A1 transfected lysate(59.00 KDa).

Lane 2: Non-transfected lysate.

[Protocol Download](#)

Gene Info — BTN1A1

Entrez GeneID	696
GeneBank Accession#	BC096312.3
Protein Accession#	AAH96312.1

Gene Name	BTN1A1
Gene Alias	BT, BTN
Gene Description	butyrophilin, subfamily 1, member A1
Omim ID	601610
Gene Ontology	Hyperlink
Gene Summary	Butyrophilin is the major protein associated with fat droplets in the milk. It is a member of the immunoglobulin superfamily. It may have a cell surface receptor function. The human butyrophilin gene is localized in the major histocompatibility complex (MHC) class I region of 6p and may have arisen relatively recently in evolution by the shuffling of exons between 2 ancestral gene families [provided by RefSeq]
Other Designations	OTTHUMP00000017981 bK14H9.2 (butyrophilin, subfamily 1, member A1)