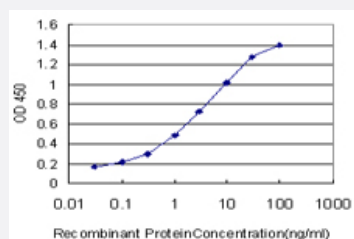


KLF9 monoclonal antibody (M01), clone 1H5

Catalog # H00000687-M01

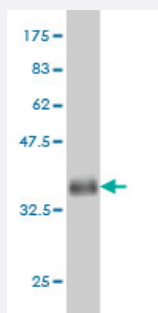
Size 100 ug

Applications



Sandwich ELISA (Recombinant protein)

Detection limit for recombinant GST tagged KLF9 is approximately 0.03ng/ml as a capture antibody.



Western Blot detection against Immunogen (34.21 KDa) .

Specification

Product Description

Mouse monoclonal antibody raised against a partial recombinant KLF9.

Immunogen

KLF9 (NP_001197, 25 a.a. ~ 101 a.a) partial recombinant protein with GST tag. MW of the GST tag alone is 26 KDa.

Sequence

PEHGVAPDAERLRLPEREVTKEHGDPGDTWKDYCTLVTIAKSLDLNKYRPIQTPSVCSDSLESP
DEDMGSDSDVTT

Host

Mouse

Reactivity

Human

Interspecies Antigen Sequence	Mouse (96); Rat (97)
Isotype	IgG2a Kappa
Quality Control Testing	Antibody Reactive Against Recombinant Protein. Western Blot detection against Immunogen (34.21 KDa) .
Storage Buffer	In 1x PBS, pH 7.4
Storage Instruction	Store at -20°C or lower. Aliquot to avoid repeated freezing and thawing.

Applications

- Western Blot (Recombinant protein)

[Protocol Download](#)

- Sandwich ELISA (Recombinant protein)

Detection limit for recombinant GST tagged KLF9 is approximately 0.03ng/ml as a capture antibody.

[Protocol Download](#)

- ELISA

Gene Info — KLF9

Entrez GeneID	687
GeneBank Accession#	NM_001206
Protein Accession#	NP_001197
Gene Name	KLF9
Gene Alias	BTEB, BTEB1
Gene Description	Kruppel-like factor 9
Omim ID	602902
Gene Ontology	Hyperlink

Gene Summary

The protein encoded by this gene is a transcription factor that binds to GC box elements located in the promoter. Binding of the encoded protein to a single GC box inhibits mRNA expression while binding to tandemly repeated GC box elements activates transcription. [provided by RefSeq]

Other Designations

OTTHUMP00000021441|basic transcription element binding protein 1