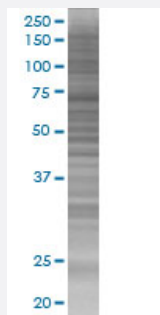


# BTC 293T Cell Transient Overexpression Lysate(Denatured)

Catalog # H00000685-T01

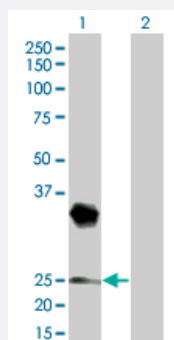
Size 100 uL

## Applications



### SDS-PAGE Gel

BTC transfected lysate.



### Western Blot

Lane 1: BTC transfected lysate ( 19.69 KDa)

Lane 2: Non-transfected lysate.

## Specification

**Transfected Cell Line** 293T

**Plasmid** pCMV-BTC full-length

**Host** Human

**Theoretical MW (kDa)** 19.69

**Quality Control Testing** Transient overexpression cell lysate was tested with Anti-BTC antibody ([H00000685-B02](#)) by Western Blots.  
SDS-PAGE Gel  
BTC transfected lysate.  
Western Blot  
Lane 1: BTC transfected lysate ( 19.69 KDa)  
Lane 2: Non-transfected lysate.

**Storage Buffer**

1X Sample Buffer (50 mM Tris-HCl, 2% SDS, 10% glycerol, 300 mM 2-mercaptoethanol, 0.01% Bromophenol blue)

**Storage Instruction**

Store at -80°C. Aliquot to avoid repeated freezing and thawing.

## Applications

- Western Blot

## Gene Info — BTC

**Entrez GeneID**[685](#)**GeneBank Accession#**[NM\\_001729](#)**Protein Accession#**[NP\\_001720](#)**Gene Name**

BTC

**Gene Alias**

-

**Gene Description**

betacellulin

**Omim ID**[600345](#)**Gene Ontology**[Hyperlink](#)**Gene Summary**

The protein encoded by this gene is a member of the EGF family of growth factors. It is synthesized primarily as a transmembrane precursor, which is then processed to mature molecule by proteolytic events. This protein is a ligand for the EGF receptor. [provided by RefSeq]

**Other Designations**

OTTHUMP00000160600

## Pathway

- [ErbB signaling pathway](#)

## Disease

- [Diabetes Mellitus](#)
- [Genetic Predisposition to Disease](#)

- [Obesity](#)