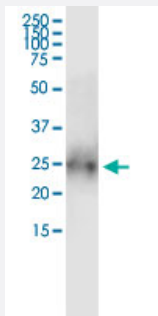


# BTC (Human) IP-WB Antibody Pair

Catalog # H00000685-PW2

Size 1 Set

## Applications



Immunoprecipitation of BTC transfected lysate using rabbit polyclonal anti-BTC and Protein A Magnetic Bead ([U0007](#)), and immunoblotted with mouse purified polyclonal anti-BTC.

## Specification

<b>Product Description</b>	This IP-WB antibody pair set comes with one antibody for immunoprecipitation and another to detect the precipitated protein in western blot.
<b>Reactivity</b>	Human
<b>Quality Control Testing</b>	Immunoprecipitation-Western Blot (IP-WB) Immunoprecipitation of BTC transfected lysate using rabbit polyclonal anti-BTC and Protein A Magnetic Bead ( <a href="#">U0007</a> ), and immunoblotted with mouse purified polyclonal anti-BTC.
<b>Supplied Product</b>	Antibody pair set content: 1. Antibody pair for IP: rabbit polyclonal anti-BTC (300 ul) 2. Antibody pair for WB: mouse purified polyclonal anti-BTC (50 ug)
<b>Storage Instruction</b>	Store reagents of the antibody pair set at -20°C or lower. Please aliquot to avoid repeated freeze thaw cycle. Reagents should be returned to -20°C storage immediately after use.

## Applications

- Immunoprecipitation-Western Blot

[Protocol Download](#)

## Gene Info — BTC

Entrez GeneID	<a href="#">685</a>
Gene Name	BTC
Gene Alias	-
Gene Description	betacellulin
Omim ID	<a href="#">600345</a>
Gene Ontology	<a href="#">Hyperlink</a>
Gene Summary	The protein encoded by this gene is a member of the EGF family of growth factors. It is synthesized primarily as a transmembrane precursor, which is then processed to mature molecule by proteolytic events. This protein is a ligand for the EGF receptor. [provided by RefSeq]
Other Designations	OTTHUMP00000160600

## Pathway

- [ErbB signaling pathway](#)

## Disease

- [Diabetes Mellitus](#)
- [Genetic Predisposition to Disease](#)
- [Obesity](#)