

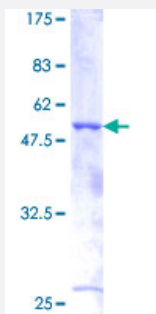
Full-Length

BTC (Human) Recombinant Protein (P01)

Catalog # H00000685-P01

Size 25 ug, 10 ug

Applications



Specification

Product Description	Human BTC full-length ORF (AAH11618, 1 a.a. - 178 a.a.) recombinant protein with GST-tag at N-terminal.
Sequence	MDRAARCSGASSLP LLLALALGLVILHCVVADGNSTRSPETNGLLCGDPEENCAATTTQSKRKG HFSRCPKQYKHYCIKGRCRFVVAEQTPSCVCDEGYIGARCERVDLFYLRGDRGQILVICMIAVMVV FIILVIGVCTCCHPLRKRKRKKKEEEMETLGKDITPINEDIEETNIA
Host	Wheat Germ (in vitro)
Theoretical MW (kDa)	45.21
Preparation Method	in vitro wheat germ expression system
Purification	Glutathione Sepharose 4 Fast Flow
Quality Control Testing	12.5% SDS-PAGE Stained with Coomassie Blue.
Storage Buffer	50 mM Tris-HCl, 10 mM reduced Glutathione, pH=8.0 in the elution buffer.
Storage Instruction	Store at -80°C. Aliquot to avoid repeated freezing and thawing.
Note	Best use within three months from the date of receipt of this protein.

Applications

- Enzyme-linked Immunoabsorbent Assay
- Western Blot (Recombinant protein)
- Antibody Production
- Protein Array

Gene Info — BTC

Entrez GeneID [685](#)

GeneBank Accession# [BC011618.1](#)

Protein Accession# [AAH11618](#)

Gene Name BTC

Gene Alias -

Gene Description betacellulin

Omim ID [600345](#)

Gene Ontology [Hyperlink](#)

Gene Summary The protein encoded by this gene is a member of the EGF family of growth factors. It is synthesized primarily as a transmembrane precursor, which is then processed to mature molecule by proteolytic events. This protein is a ligand for the EGF receptor. [provided by RefSeq]

Other Designations OTTHUMP00000160600

Pathway

- [ErbB signaling pathway](#)

Disease

- [Diabetes Mellitus](#)
- [Genetic Predisposition to Disease](#)
- [Obesity](#)