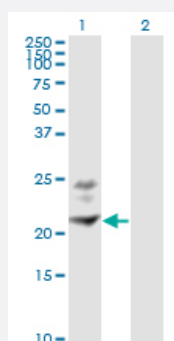


# BST2 monoclonal antibody (M02), clone 3H4

Catalog # H00000684-M02

Size 100 ug

## Applications

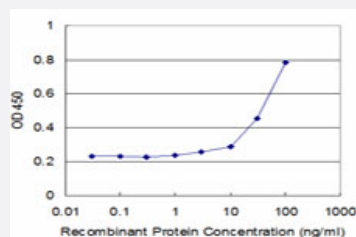


### Western Blot (Transfected lysate)

Western Blot analysis of BST2 expression in transfected 293T cell line by BST2 monoclonal antibody (M02), clone 3H4.

Lane 1: BST2 transfected lysate (19.8 KDa).

Lane 2: Non-transfected lysate.



### Sandwich ELISA (Recombinant protein)

Detection limit for recombinant GST tagged BST2 is approximately 3 ng/ml as a capture antibody.



Western Blot detection against Immunogen (41.25 KDa) .

## Specification

### Product Description

Mouse monoclonal antibody raised against a full-length recombinant BST2.

<b>Immunogen</b>	BST2 (AAH33873, 40 a.a. ~ 180 a.a) full-length recombinant protein with GST tag. MW of the GST tag alone is 26 KDa.
<b>Sequence</b>	PLIIFTIKANSEACRDGLRAVMECRNVTHLLQQELTEAQKGFQDVEAQAATCNHTVMALMASLDA EKAQQGQKKVEELEGEITTLNHKLQDASAEVERLRRENQVLSVRIADKKYYPSSQDSSSAAAPQLLI VLLGLSALLQ
<b>Host</b>	Mouse
<b>Reactivity</b>	Human
<b>Isotype</b>	IgG2a Kappa
<b>Quality Control Testing</b>	Antibody Reactive Against Recombinant Protein. Western Blot detection against Immunogen (41.25 KDa) .
<b>Storage Buffer</b>	In 1x PBS, pH 7.4
<b>Storage Instruction</b>	Store at -20°C or lower. Aliquot to avoid repeated freezing and thawing.

## Applications

- Western Blot (Transfected lysate)

Western Blot analysis of BST2 expression in transfected 293T cell line by BST2 monoclonal antibody (M02), clone 3H4.

Lane 1: BST2 transfected lysate(19.8 KDa).

Lane 2: Non-transfected lysate.

[Protocol Download](#)

- Western Blot (Recombinant protein)

[Protocol Download](#)

- Sandwich ELISA (Recombinant protein)

Detection limit for recombinant GST tagged BST2 is approximately 3ng/ml as a capture antibody.

[Protocol Download](#)

- ELISA

## Gene Info — BST2

Entrez GeneID

[684](#)

GeneBank Accession#	<a href="#">BC033873</a>
Protein Accession#	<a href="#">AAH33873</a>
Gene Name	BST2
Gene Alias	CD317
Gene Description	bone marrow stromal cell antigen 2
Omim ID	<a href="#">600534</a>
Gene Ontology	<a href="#">Hyperlink</a>
Gene Summary	Bone marrow stromal cells are involved in the growth and development of B-cells. The specific function of the protein encoded by the bone marrow stromal cell antigen 2 is undetermined; however, this protein may play a role in pre-B-cell growth and in rheumatoid arthritis. [provided by RefSeq
Other Designations	tetherin

## Publication Reference

- [Release of filamentous and spherical influenza A virus is not restricted by tetherin.](#)

Bruce EA, Abbink TE, Wise HM, Rollason R, Galao RP, Banting G, Neil SJ, Digard P.

Journal of General Virology 2012 Jan; 93(Pt5):963.

Application: Flow Cyt, Human, HeLa

## Disease

- [Genetic Predisposition to Disease](#)
- [Ovarian Neoplasms](#)