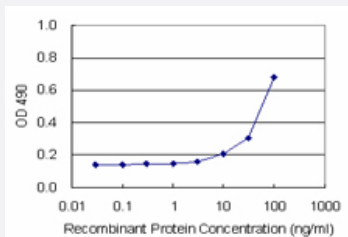


# BST2 (Human) Matched Antibody Pair

Catalog # H00000684-AP12      Size 1 Set

## Applications



Sandwich ELISA detection sensitivity ranging from 10 ng/ml to 100 ng/ml.

## Specification

<b>Product Description</b>	This antibody pair set comes with a matched antibody pair to detect and quantify the protein level of human BST2.
<b>Reactivity</b>	Human
<b>Quality Control Testing</b>	Standard curve using recombinant protein ( H00000684-P01 ) as an analyte. Sandwich ELISA detection sensitivity ranging from 10 ng/ml to 100 ng/ml.
<b>Supplied Product</b>	Antibody pair set content: 1. Capture antibody: rabbit MaxPab® affinity purified polyclonal anti-BST2 (100 ug) 2. Detection antibody: mouse monoclonal anti-BST2, IgG2a Kappa (20 ug) *Reagents are sufficient for at least 1-2 x 96 well plates using recommended protocols.
<b>Storage Instruction</b>	Store reagents of the antibody pair set at -20°C or lower. Please aliquot to avoid repeated freeze thaw cycle. Reagents should be returned to -20°C storage immediately after use.

## Applications

- ELISA Pair (Recombinant protein)

[Protocol Download](#)

## Gene Info — BST2

Entrez GeneID	<a href="#">684</a>
Gene Name	BST2
Gene Alias	CD317
Gene Description	bone marrow stromal cell antigen 2
Omim ID	<a href="#">600534</a>
Gene Ontology	<a href="#">Hyperlink</a>
Gene Summary	Bone marrow stromal cells are involved in the growth and development of B-cells. The specific function of the protein encoded by the bone marrow stromal cell antigen 2 is undetermined; however, this protein may play a role in pre-B-cell growth and in rheumatoid arthritis. [provided by RefSeq
Other Designations	tetherin

## Disease

- [Genetic Predisposition to Disease](#)
- [Ovarian Neoplasms](#)