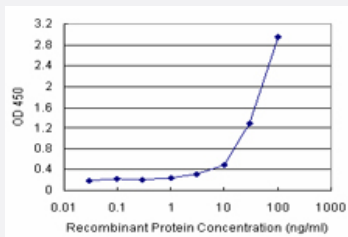


BST2 (Human) Matched Antibody Pair

Catalog # H00000684-AP11

Size 1 Set

Applications



Sandwich ELISA detection sensitivity ranging from 1 ng/ml to 100 ng/ml.

Specification

| | |
|--------------------------------|--|
| Product Description | This antibody pair set comes with a matched antibody pair to detect and quantify the protein level of human BST2. |
| Reactivity | Human |
| Quality Control Testing | Standard curve using recombinant protein (H00000684-P01) as an analyte. Sandwich ELISA detection sensitivity ranging from 1 ng/ml to 100 ng/ml. |
| Supplied Product | Antibody pair set content: 1. Capture antibody: rabbit MaxPab® affinity purified polyclonal anti-BST2 (100 ug) 2. Detection antibody: mouse monoclonal anti-BST2, IgG2a Kappa (20 ug) *Reagents are sufficient for at least 1-2 x 96 well plates using recommended protocols. |
| Storage Instruction | Store reagents of the antibody pair set at -20°C or lower. Please aliquot to avoid repeated freeze thaw cycle. Reagents should be returned to -20°C storage immediately after use. |

Applications

- ELISA Pair (Recombinant protein)

[Protocol Download](#)

Gene Info — BST2

| | |
|--------------------|--|
| Entrez GeneID | 684 |
| Gene Name | BST2 |
| Gene Alias | CD317 |
| Gene Description | bone marrow stromal cell antigen 2 |
| Omim ID | 600534 |
| Gene Ontology | Hyperlink |
| Gene Summary | Bone marrow stromal cells are involved in the growth and development of B-cells. The specific function of the protein encoded by the bone marrow stromal cell antigen 2 is undetermined; however, this protein may play a role in pre-B-cell growth and in rheumatoid arthritis. [provided by RefSeq |
| Other Designations | tetherin |

Disease

- [Genetic Predisposition to Disease](#)
- [Ovarian Neoplasms](#)