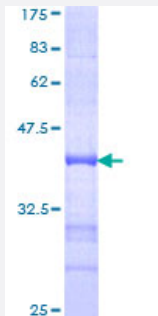


ZFP36L1 (Human) Recombinant Protein (Q01)

Catalog # H00000677-Q01

Size 25 ug, 10 ug

Applications



Specification

| | |
|--------------------------------------|---|
| Product Description | Human ZFP36L1 partial ORF (NP_004917, 1 a.a. - 108 a.a.) recombinant protein with GST-tag at N-terminal. |
| Sequence | MTTTLVSATIFDLSEVLCKGNKMLNYSAPSAGGCLLDRAKAVGTPAGGGFPRRHSTLPSSKFHQN QLLSSSLKGEPAPALSSRDSRFRDRSFSEGGERLLPTQKQPGGG |
| Host | Wheat Germ (in vitro) |
| Theoretical MW (kDa) | 37.62 |
| Interspecies Antigen Sequence | Mouse (97); Rat (97) |
| Preparation Method | in vitro wheat germ expression system |
| Purification | Glutathione Sepharose 4 Fast Flow |
| Quality Control Testing | 12.5% SDS-PAGE Stained with Coomassie Blue. |
| Storage Buffer | 50 mM Tris-HCl, 10 mM reduced Glutathione, pH=8.0 in the elution buffer. |
| Storage Instruction | Store at -80°C. Aliquot to avoid repeated freezing and thawing. |
| Note | Best use within three months from the date of receipt of this protein. |

Applications

- Enzyme-linked Immunoabsorbent Assay
- Western Blot (Recombinant protein)
- Antibody Production
- Protein Array

Gene Info — ZFP36L1

Entrez GeneID [677](#)

GeneBank Accession# [NM_004926](#)

Protein Accession# [NP_004917](#)

Gene Name ZFP36L1

Gene Alias BRF1, Berg36, ERF-1, ERF1, RNF162B, TIS11B, cMG1

Gene Description zinc finger protein 36, C3H type-like 1

Omim ID [601064](#)

Gene Ontology [Hyperlink](#)

Gene Summary This gene is a member of the TIS11 family of early response genes. Family members are induced by various agonists such as the phorbol ester TPA and the polypeptide mitogen EGF. The gene is well conserved across species and has a promoter that contains motifs seen in other early-response genes. The encoded protein contains a distinguishing putative zinc finger domain with a repeating cys-his motif. This putative nuclear transcription factor most likely functions in regulating the response to growth factors. [provided by RefSeq]

Other Designations EGF-response factor 1|butyrate response factor 1|early response factor Berg36|zinc finger protein, C3H type, 36-like 1