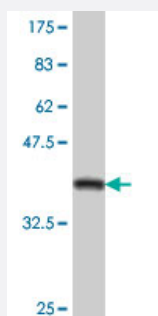


# ZFP36L1 polyclonal antibody (A01)

Catalog # H00000677-A01

Size 50 uL

## Applications



Western Blot detection against Immunogen (37.99 KDa) .

## Specification

<b>Product Description</b>	Mouse polyclonal antibody raised against a partial recombinant ZFP36L1.
<b>Immunogen</b>	ZFP36L1 (NP_004917, 1 a.a. ~ 108 a.a) partial recombinant protein with GST tag.
<b>Sequence</b>	MTTTLVSATIFDLSEVLCKGNKMLNYSAPSAGGCLLDRKAVGTPAGGGFPRRHSLPSSKFHQN QLLSSLKGEPAPALSSRDSRFRDRSFSEGGERLLPTQKQPGGG
<b>Host</b>	Mouse
<b>Reactivity</b>	Human
<b>Interspecies Antigen Sequence</b>	Mouse (97); Rat (97)
<b>Quality Control Testing</b>	Antibody Reactive Against Recombinant Protein. Western Blot detection against Immunogen (37.99 KDa) .
<b>Storage Buffer</b>	50 % glycerol
<b>Storage Instruction</b>	Store at -20°C or lower. Aliquot to avoid repeated freezing and thawing.

## Applications

- Western Blot (Recombinant protein)

[Protocol Download](#)

- ELISA

## Gene Info — ZFP36L1

Entrez GeneID [677](#)

GeneBank Accession# [NM\\_004926](#)

Protein Accession# [NP\\_004917](#)

Gene Name ZFP36L1

Gene Alias BRF1, Berg36, ERF-1, ERF1, RNF162B, TIS11B, cMG1

Gene Description zinc finger protein 36, C3H type-like 1

Omim ID [601064](#)

Gene Ontology [Hyperlink](#)

**Gene Summary** This gene is a member of the TIS11 family of early response genes. Family members are induced by various agonists such as the phorbol ester TPA and the polypeptide mitogen EGF. The gene is well conserved across species and has a promoter that contains motifs seen in other early-response genes. The encoded protein contains a distinguishing putative zinc finger domain with a repeating cys-his motif. This putative nuclear transcription factor most likely functions in regulating the response to growth factors. [provided by RefSeq]

**Other Designations** EGF-response factor 1|butyrate response factor 1|early response factor Berg36|zinc finger protein, C3H type, 36-like 1